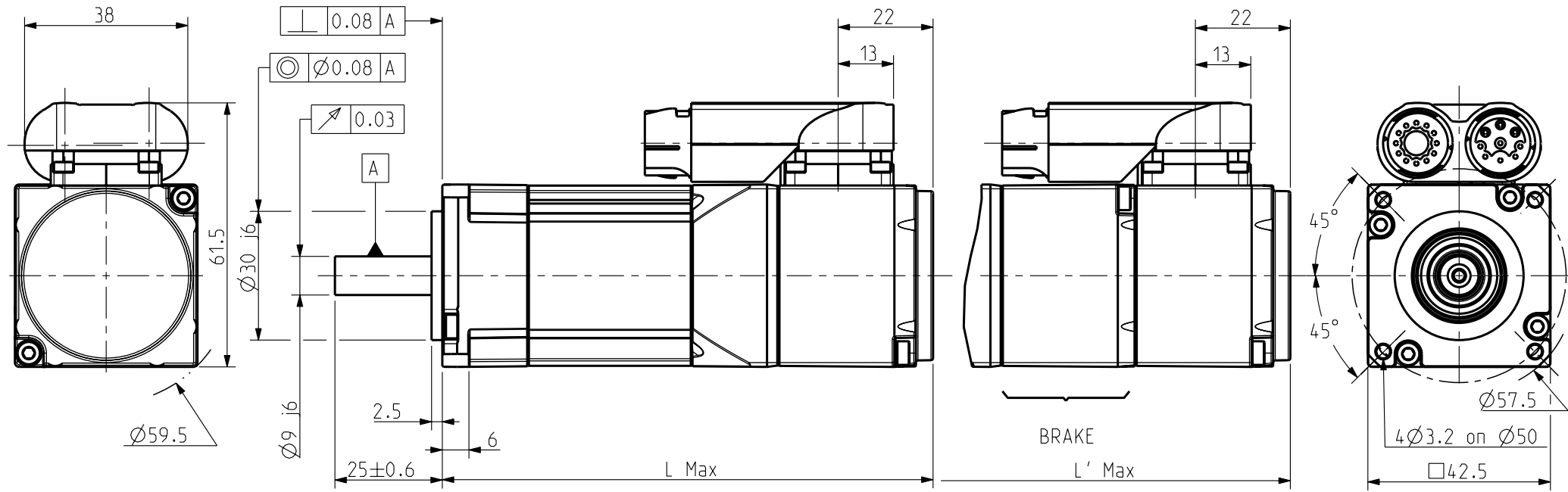


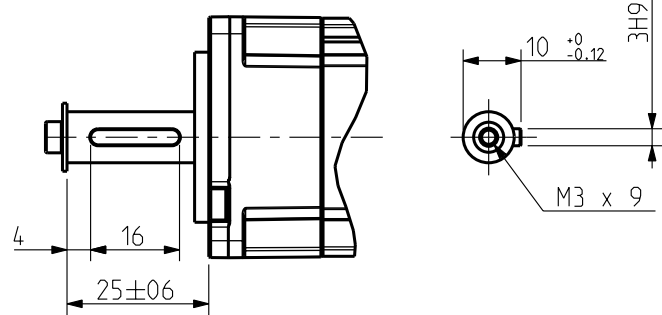
Feedback Letter : A



FEEDBACK OPTIONS

Scale 3/4

KEY



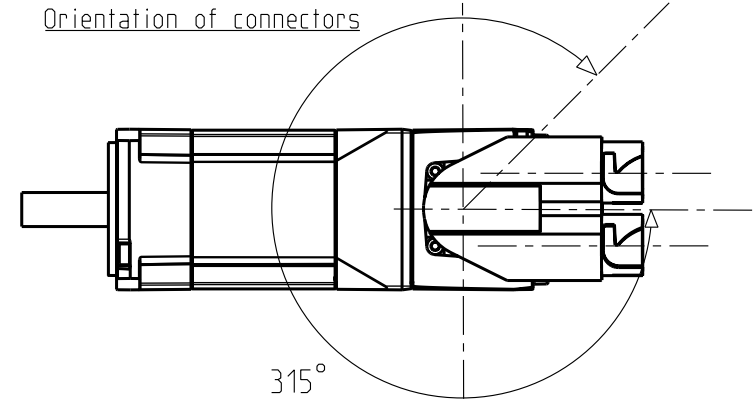
BRAKE Supply voltage : 24V ±10%
Static torque

20 °C	0.4 Nm
100 °C	*

WEIGHT

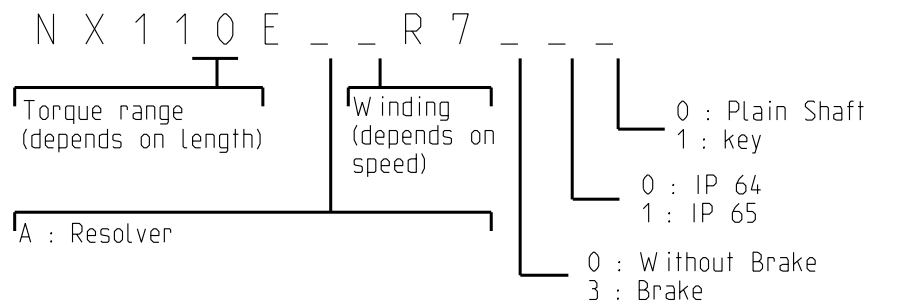
	NX110
No Brake	0.8 Kg
With Brake	1 Kg

Orientation of connectors



Scale 3/4

Feedback option (Feedback letter)	Resolver (A)
L (mm)	115
L' (mm)	146



See connectors pin out and encoder settings on drawing 344993

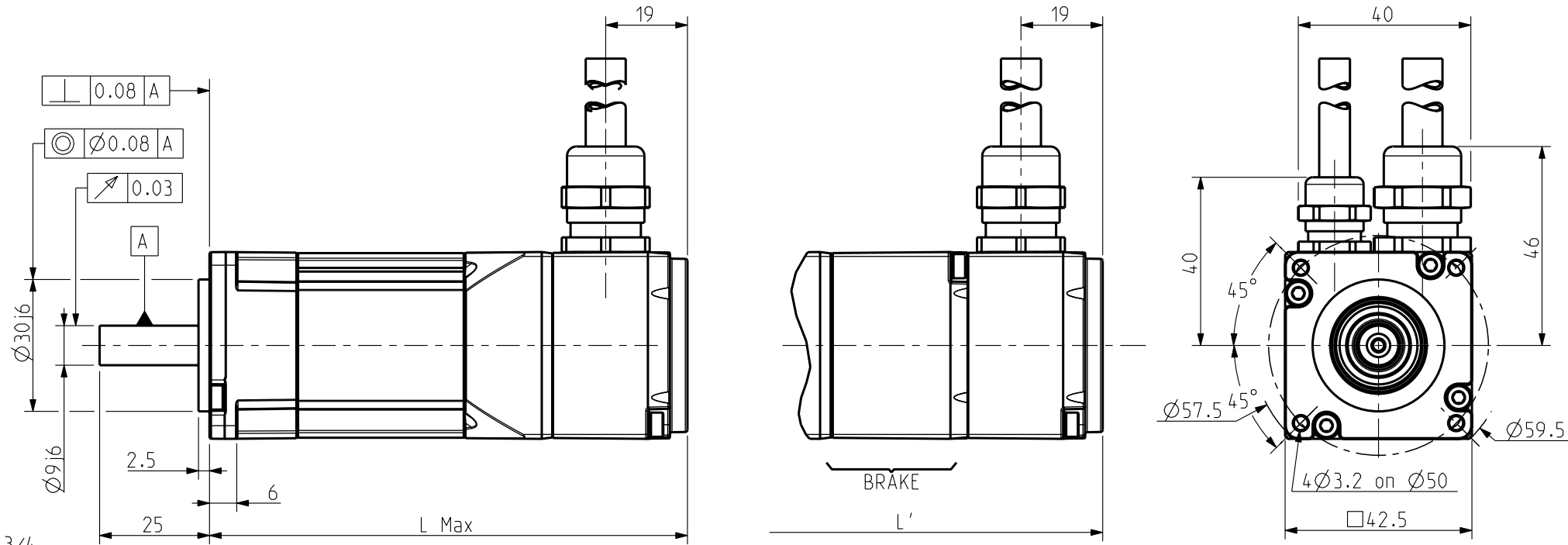
Sheet : 1/3

This document is the property of PARVEX. Transmission as well as reproduction or copy is not permitted without written authorisation.	General tolerances	Drawn	26/11/09	BB	Visa	BB													
	DIN ISO 2768 mk	Modifications																	
		A	AM23337	15/02/10	OD														



NX100	Format A3
CONNECTOR VARIANT	344581

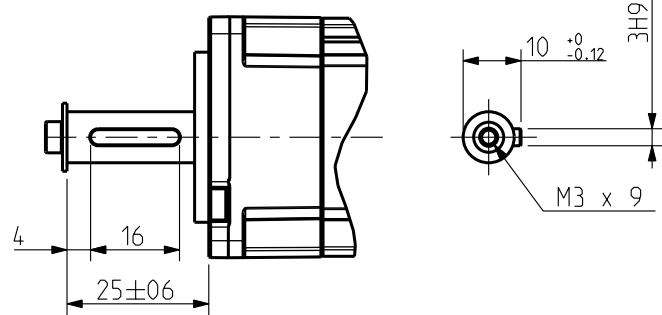
Feedback Letter : A



Scale 3/4

FEEDBACK OPTIONS

KEY



Scale 3/4

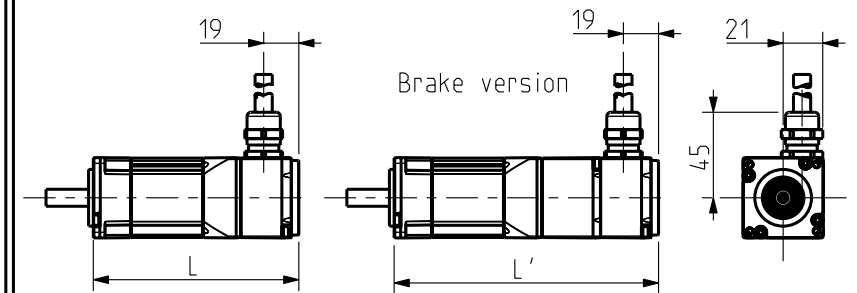
BRAKE Supply voltage : 24V $\pm 10\%$
Static torque

20 °C	0.4 Nm
100 °C	*

WEIGHT

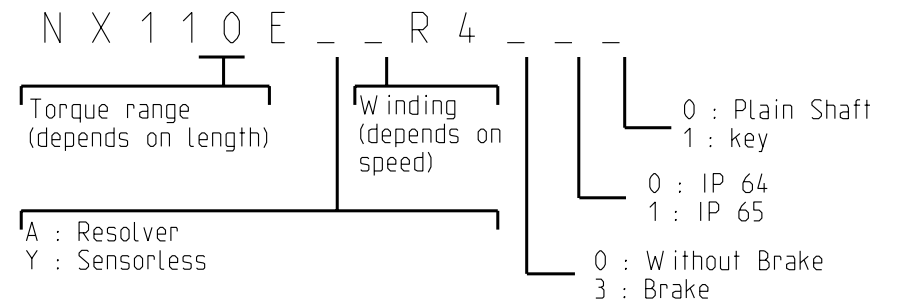
	NX110
No Brake	0.8 Kg
With Brake	1 Kg

Feedback Letter : Y



Scale 1/4

Feedback option (Feedback letter)	Resolver (A)	Sensorless (Y)
L (mm)	110	110
L' (mm)	141	141



WIRES INSIDE PVC SHEATH
OVERALL SHIELDING

See wire connection and encoder settings on drawing 344993

Sheet : 2/3

This document is the property of PARVEX. Transmission as well as reproduction or copy is not permitted without written authorisation.	General tolerances	Drawn	26/11/09	BB	Visa															
	DIN ISO 2768 mk	Modifications																		
		A	AM23337	15/02/10	OD															

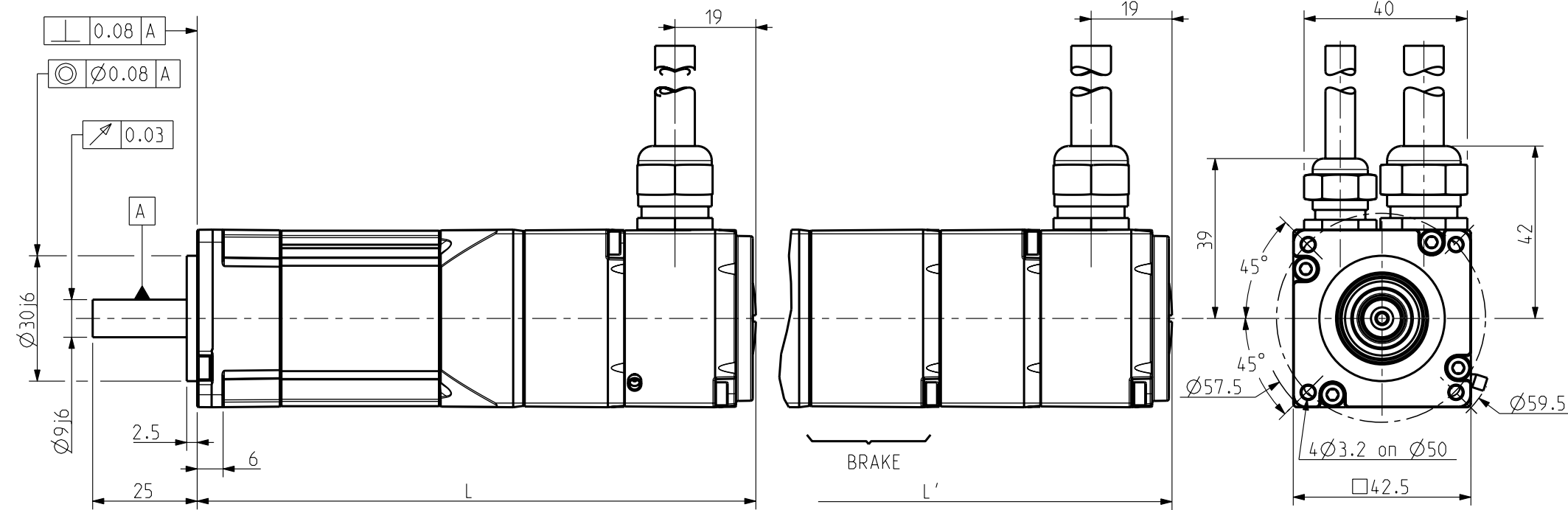


NX100

WIRES INSIDE PVC SHEATH

Format A3
344581
A

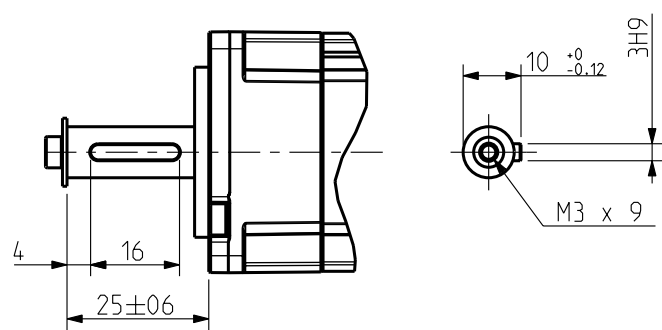
Feedback Letter : A



Scale 3/4

FEEDBACK OPTIONS

KEY



BRAKE Supply voltage : 24V $\pm 10\%$
Static torque

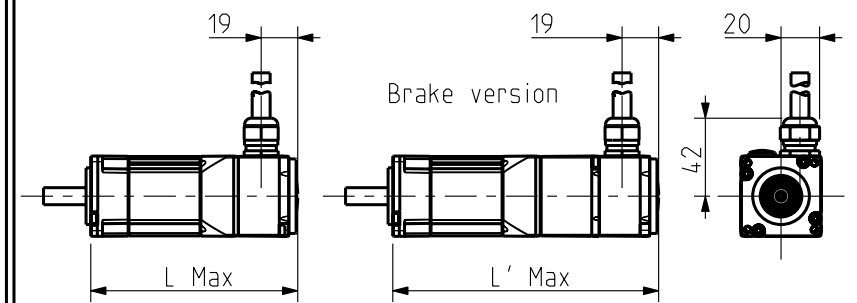
20 °C	0.4 Nm
100 °C	*

WEIGHT

	NX110
No Brake	0.8 Kg
With Brake	1 Kg

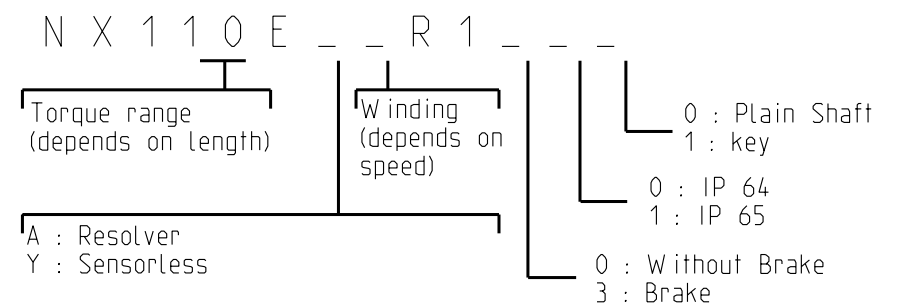
Scale 3/4

FEEDBACK LETTER : Y



Scale 1/4

Feedback option (Feedback letter)	Resolver (A)	Sensorless (Y)
L (mm)	134	110
L' (mm)	165	141



See wire connection and encoder settings on drawing 344993

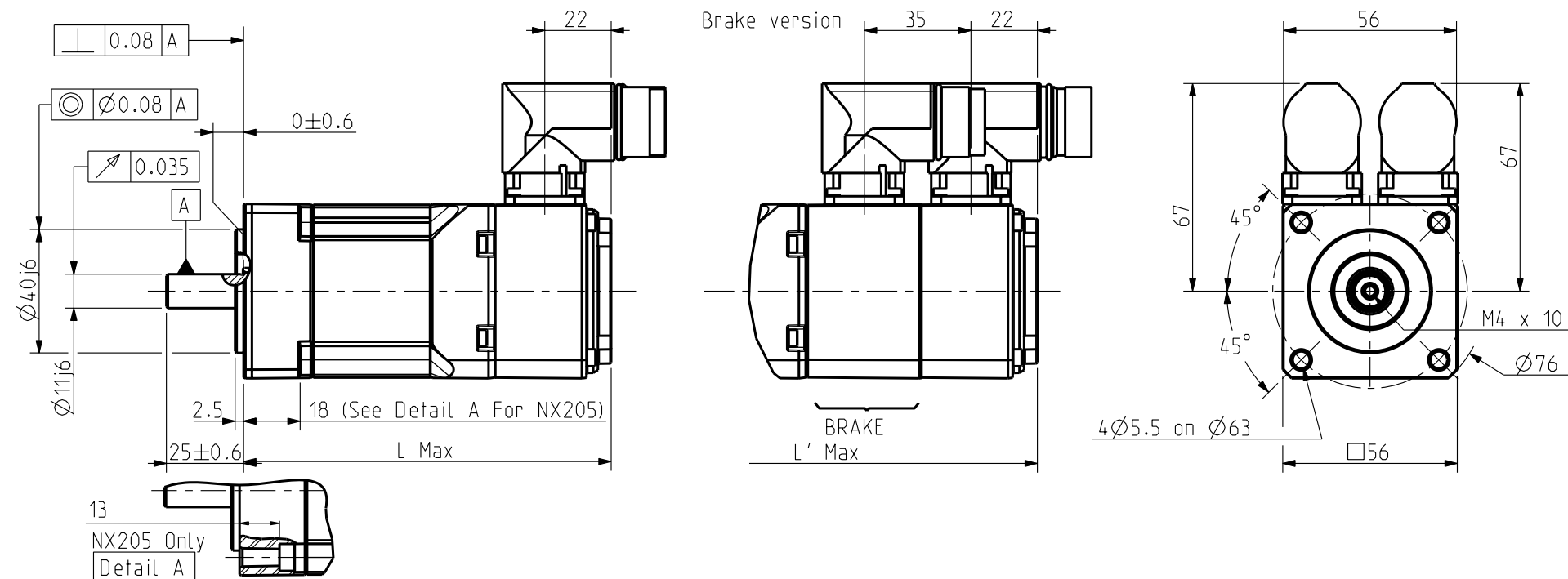
Sheet : 3/3

This document is the property of PARVEX. Transmission as well as reproduction or copy is not permitted without written authorisation.	General tolerances	Drawn	26/11/09	BB	Visa													
	DIN ISO 2768 mk	Modifications																
		A	AM23337	15/02/10	OD													



NX100	Format A3
CABLE VARIANT	344581

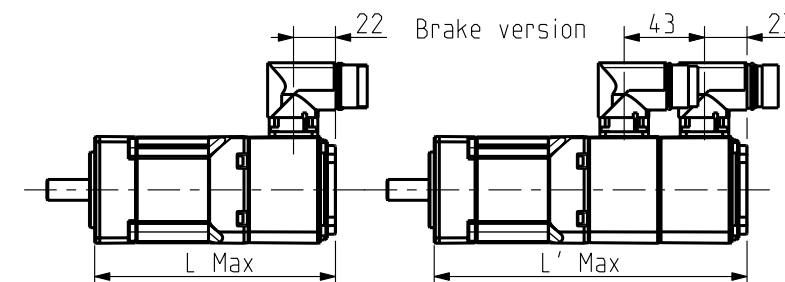
Feedback Letter : A / X



Scale 1/2

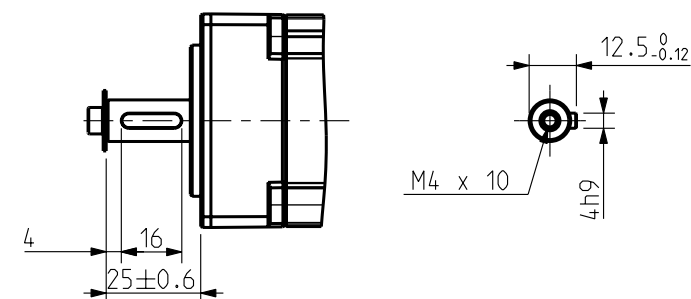
FEEDBACK OPTIONS

Feedback Letter : R/S



Scale 1/4

KEY



Scale 1/2

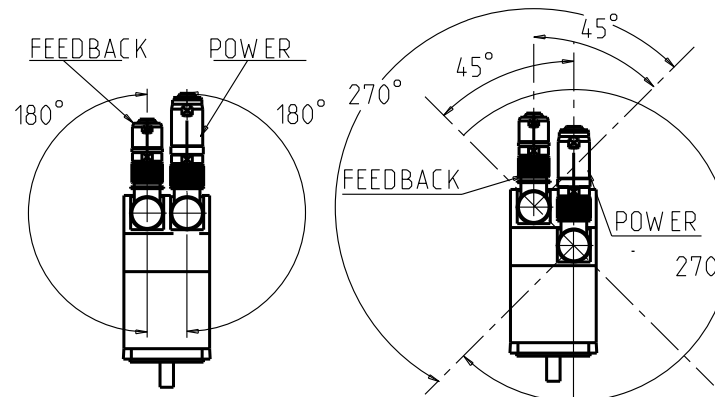
BRAKE Supply voltage : 24V ±10%
Static torque

20 °C	1 Nm
100 °C	*

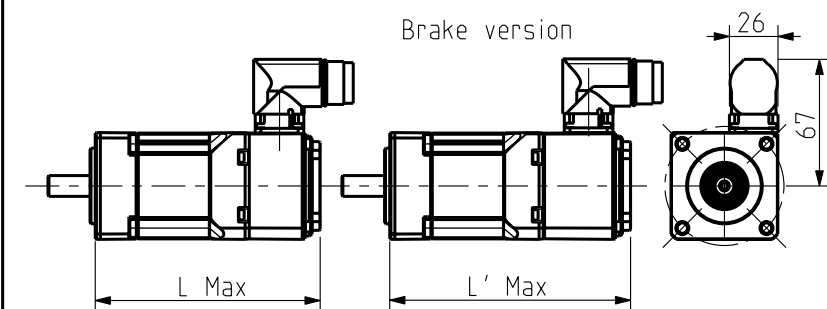
WEIGHT

	NX205	NX210
No Brake	0.8 Kg	1.3 Kg
With Brake	1.1 Kg	1.6 Kg

ORIENTATION OF CONNECTORS



Feedback Letter : Y



Scale : 1/4

	Feedback option (feedback letter)	Resolver (A)	Low cost encoder (X)	Hiperface SKS36 (R)	Hiperface SKM36 (S)	Sensorless (Y)
NX205	L (mm)	100		108		100
	L' (mm)	137		146		108
NX210	L (mm)	120		128		120
	L' (mm)	157		166		128

N X 2 _ _ E _ _ R 7 _ _ _

Torque range (depends on length)

Winding (depends on speed)

0 : Plain Shaft
1 : key

0 : IP 64
1 : IP 65

A : Resolver
R : Hiperface Singleturn SKS36
S : Hiperface Multiturn SKM36
X : Low Cost Encoder
Y : Sensorless

0 : Without Brake
3 : Brake
* : Thermal protection options on drawing 344993

See connectors pin out and encoder settings on drawing 344993

Sheet : 1/4

This document is the property of PARVEX. Transmission as well as reproduction or copy is not permitted without written authorisation.	General tolerances	Drawn	26/11/09	BB	Visa																
	DIN ISO 2768 mk	Modifications	C	AM23878 08/06/12 OD																	
		A	AM23337 15/02/10 OD		D	AM 24108 22/04/13 SD															



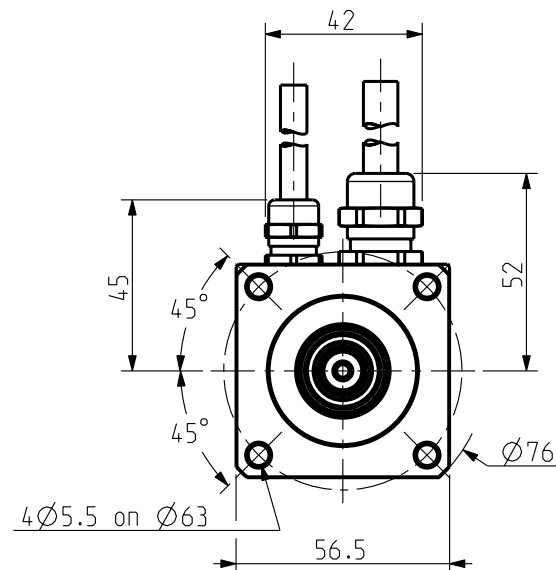
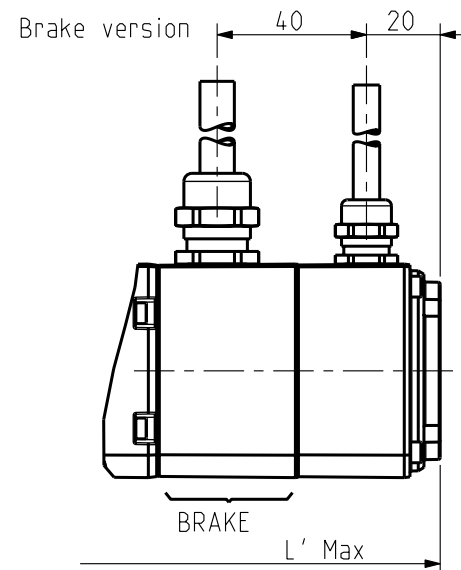
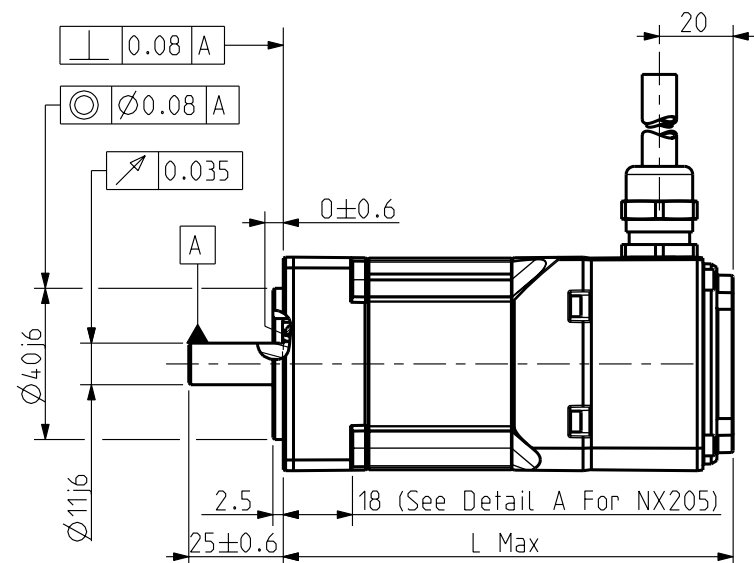
NX200

CONNECTOR VARIANT

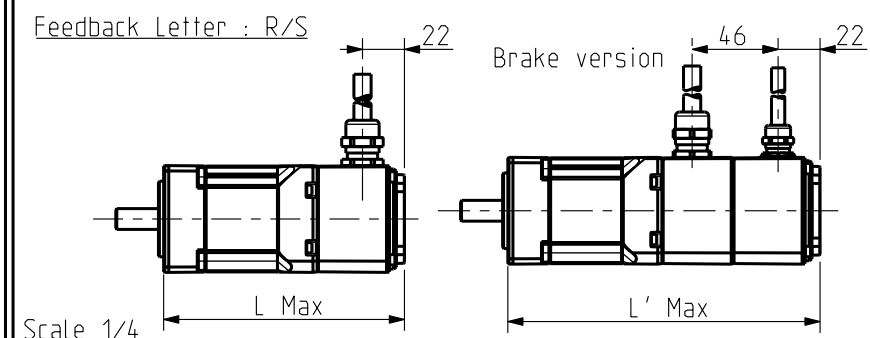
Format A3

344594

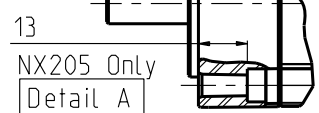
Feedback Letter : A / X



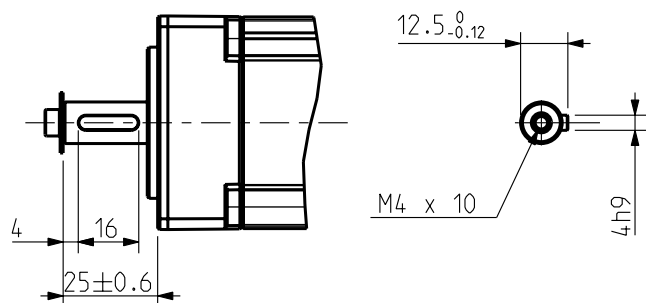
FEEDBACK OPTIONS



Scale 1/2



KEY



BRAKE Supply voltage : 24V ±10%
Static torque

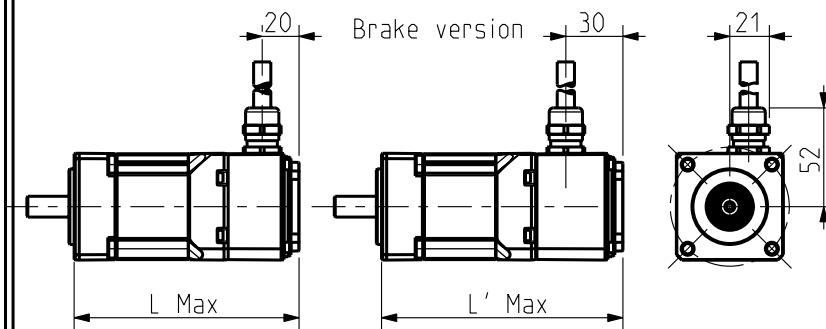
20 °C	1 Nm
100 °C	*

WEIGHT

	NX205	NX210
No Brake	0.8 Kg	1.3 Kg
With Brake	1.1 Kg	1.6 Kg

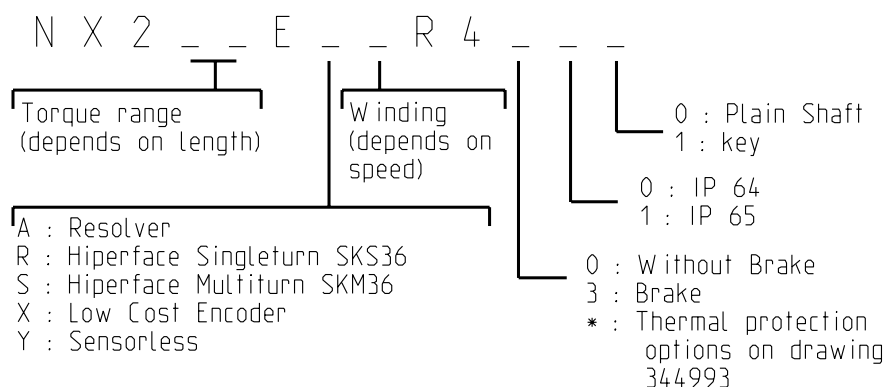
Scale 1/2

Feedback Letter : Y



Scale 1/4

	Feedback option (feedback letter)	Resolver (A)	Low cost encoder (X)	Hiperface SKS36 (R)	Hiperface SKM36 (S)	Sensorless (Y)
NX205	L (mm)	100		108		100
	L' (mm)	137		146		119
NX210	L (mm)	120		128		120
	L' (mm)	157		166		129



WIRES INSIDE PVC SHEATH
OVERALL SHIELDING

See wire connection out and encoder settings on drawing 344993

Sheet : 2/4

This document is the property of PARVEX. Transmission as well as reproduction or copy is not permitted without written authorisation.	General tolerances	Drawn	26/11/09	BB	Visa															
	DIN ISO 2768 mk	Modifications	C	AM23878 08/06/12 OD																
		A	AM23337 15/02/10 OD		D	AM 24108 22/04/13 SD														

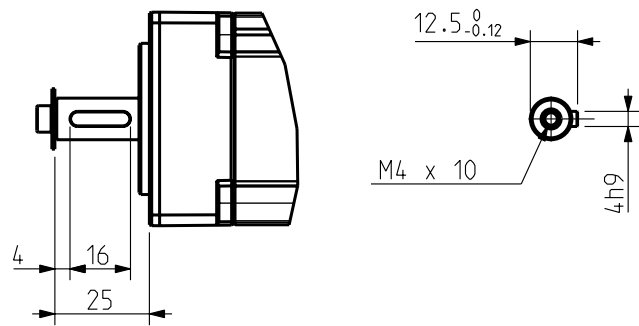
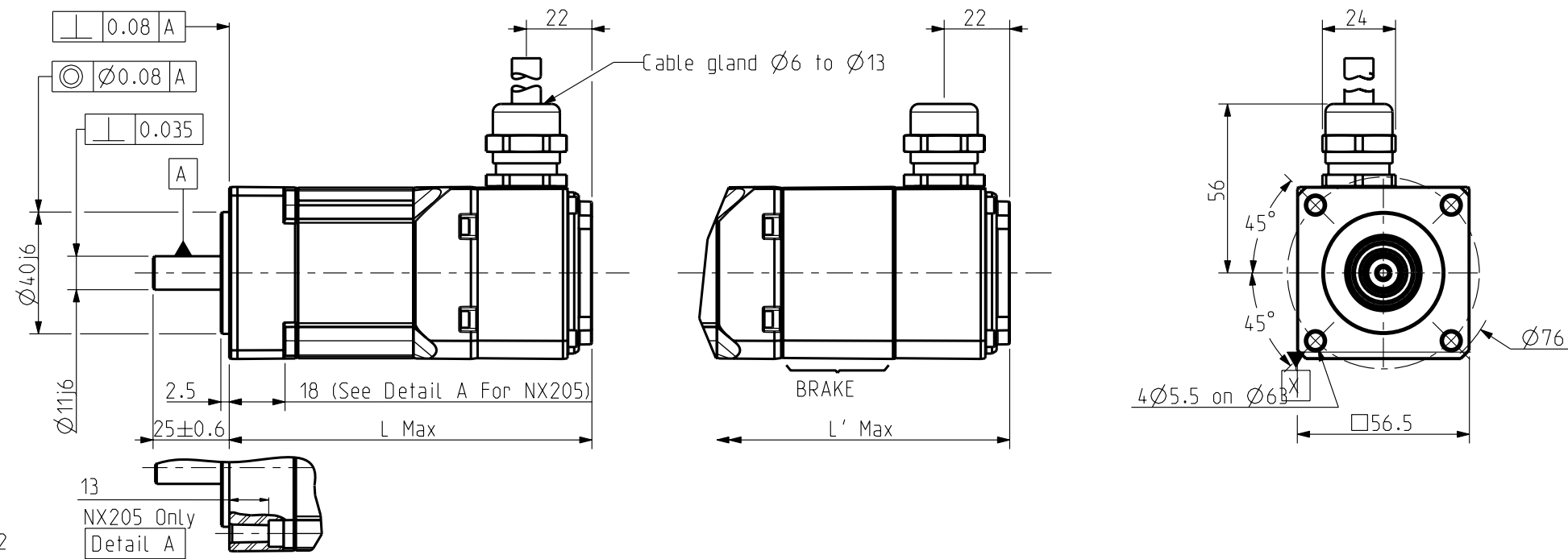


NX200

WIRES INSIDE PVC SHEATH

Format A3
344594

Feedback Letter : Y



BRAKE Supply voltage : 24V $\pm 10\%$
Static torque

20 °C	1 Nm
100 °C	*

WEIGHT

	NX205	NX210
No Brake	0.8 Kg	1.3 Kg
With Brake	1.1 Kg	1.6 Kg

	Feedback option (feedback letter)	Sensorless (Y)
NX205	L (mm)	100
	L' (mm)	137
NX210	L (mm)	120
	L' (mm)	157

N X 2 _ _ E Y _ R 6 _ _ _

Torque range (depends on length)

Winding (depends on speed)

0 : Plain Shaft
1 : key

0 : IP 64
1 : IP 65

0 : Without Brake
3 : Brake
* : Thermal protection options on drawing 344993

See connectors pin out and encoder settings on drawing 344993

Sheet : 3/4

This document is the property of PARVEX. Transmission as well as reproduction or copy is not permitted without written authorisation.

General tolerances
DIN ISO 2768 mk

Drawn	26/11/09	BB	Visa				
Modifications	C	AM23878 08/06/12 OD					
	B	AM23403 10/05/10 OD					
	A	AM23337 15/02/10 OD	D	AM 24108 22/04/13 SD			

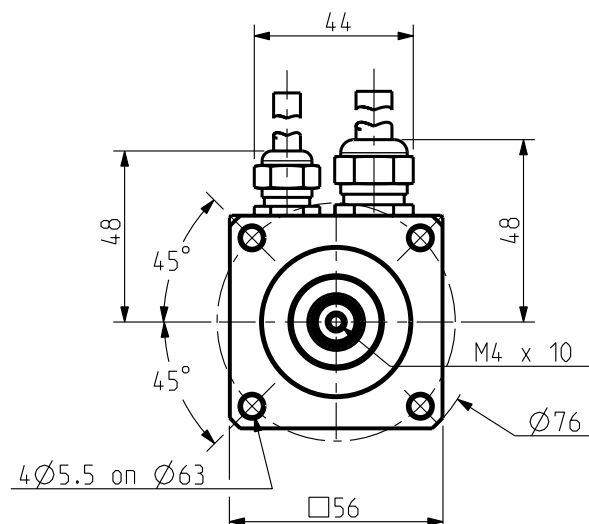
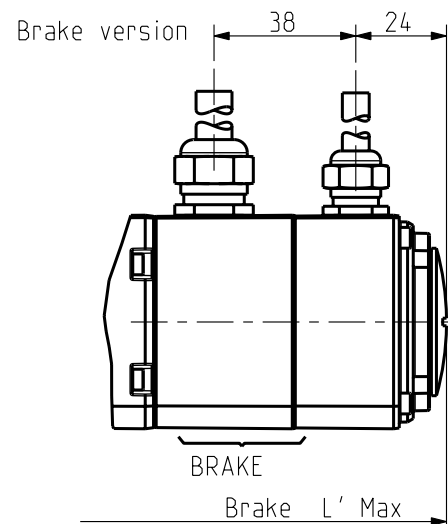
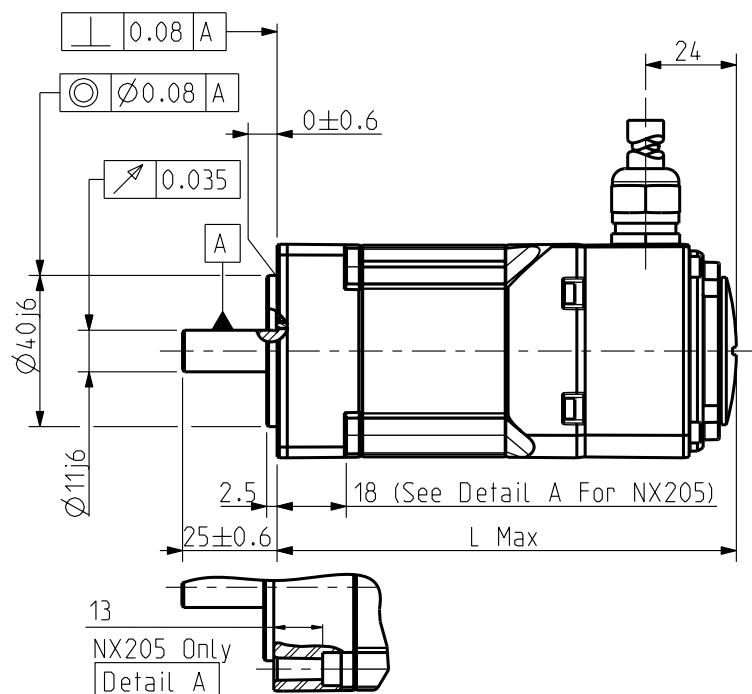
Scale
1/2

Parker
8 Avenue du Lac. BP 249
21007-DIJON cedex-FRANCE
www.SSDrives.com

NX200
SENSORLESS VARIANT

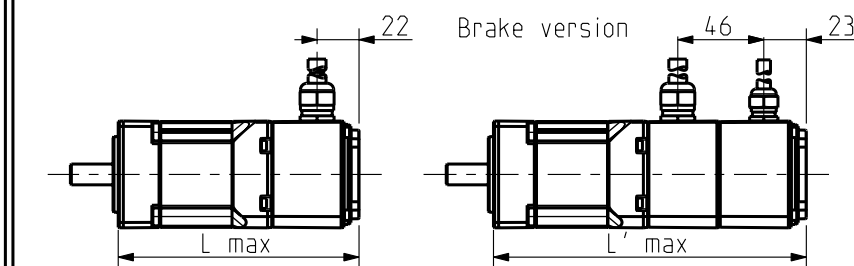
Format
A3
344594

Feedback Letter : A / X



FEEDBACK OPTIONS

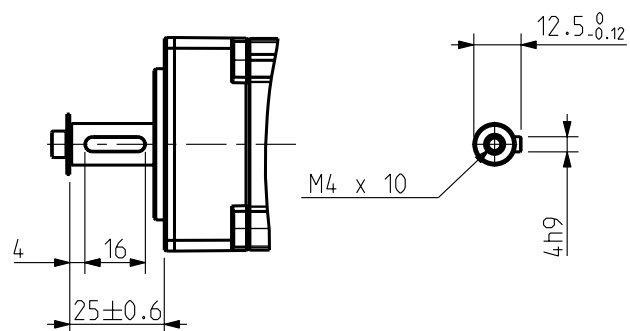
Feedback Letter : R/S



Scale 1/4

Scale 1/2

KEY



BRAKE Supply voltage : 24V ±10%
Static torque

20 °C	1 Nm
100 °C	*

WEIGHT

	NX205	NX210
No Brake	0.8 Kg	1.3 Kg
With Brake	1.1 Kg	1.6 Kg

Scale 1/2

	Feedback option (feedback letter)	Resolver (A)	Low cost encoder (X)	Hiperface SKS36 (R)	Hiperface SKM36 (S)
NX205	L (mm)		102		106
	L' (mm)		140		146
NX210	L (mm)		122		128
	L' (mm)		160		166

N X 2 _ _ E _ _ R 1 _ _ _

Torque range (depends on length)

Winding (depends on speed)

0 : Plain Shaft
1 : key

0 : IP 64
1 : IP 65

A : Resolver
R : Hiperface Singleturn SKS36
S : Hiperface Multiturn SKM36
X : Low Cost Encoder
Y : Sensorless

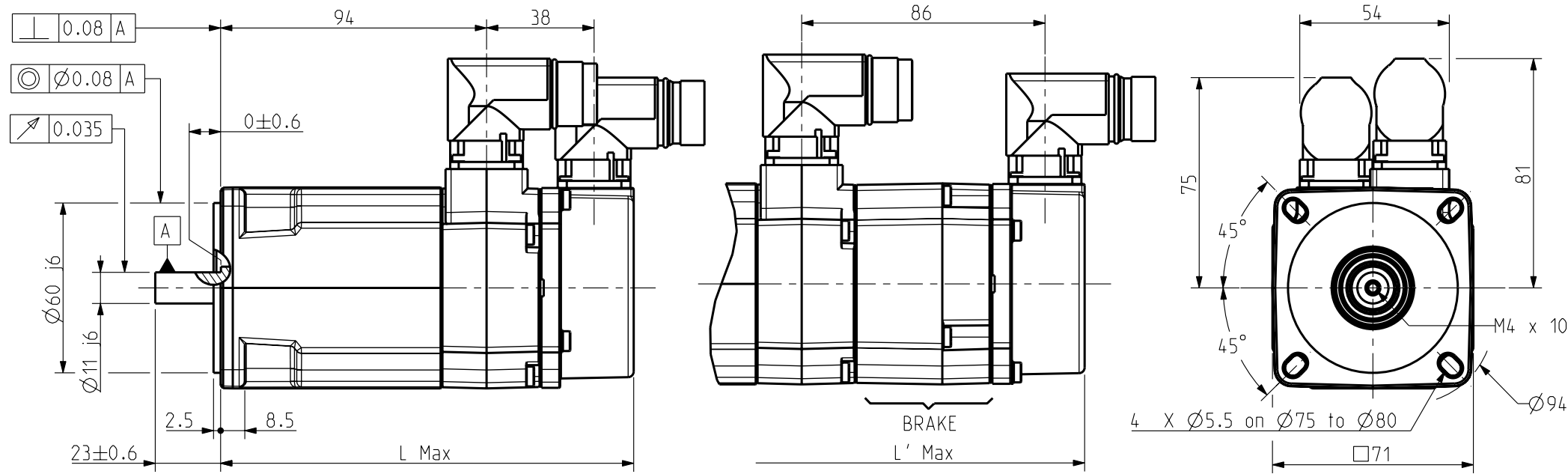
0 : Without Brake
3 : Brake
* : Thermal protection options on drawing 344993

See wire connection out and encoder settings on drawing 344993

Sheet : 4/4

This document is the property of PARVEX. Transmission as well as reproduction or copy is not permitted without written authorisation.	General tolerances	Drawn	26/11/09	BB	Visa					Scale 1/2	 8 Avenue du Lac. BP 249 21007-DIJON cedex-FRANCE www.SSDdrives.com	NX200 CABLE VARIANT	Format	A3	344594	D
	DIN ISO 2768 mk	Modifications	C	AM23878	08/06/12	OD										
		B	AM23403	10/05/10	OD											

Feedback letter : A/X

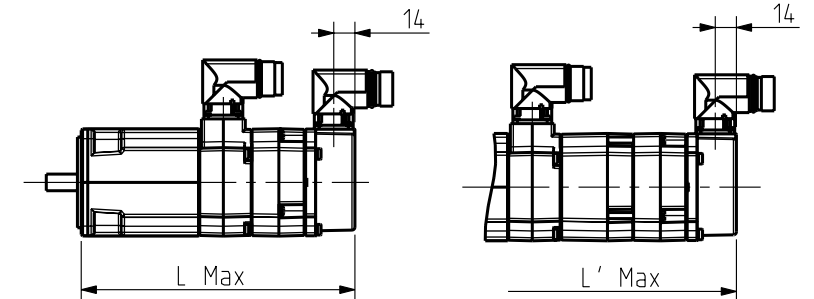


Scale 1:2

Brake Version

FEEDBACK OPTIONS

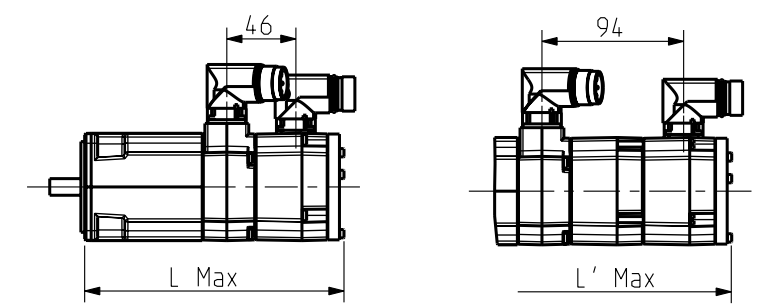
Feedback letter : R/S/V/W



Scale 1:5

Brake Version

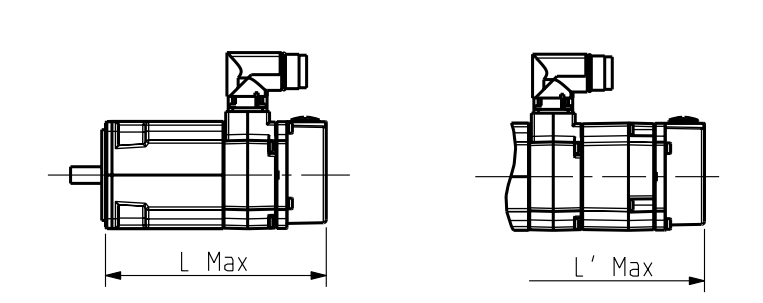
Feedback letter : T/U



Scale 1:5

Brake Version

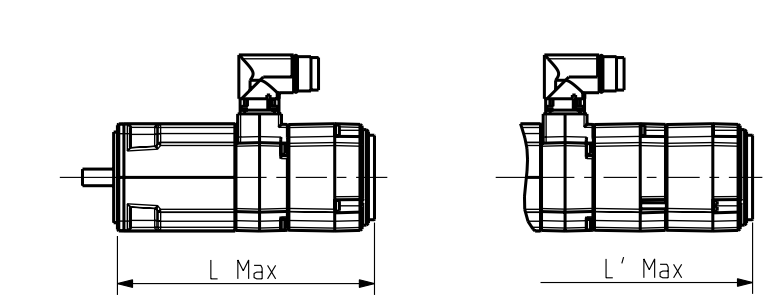
Feedback letter : Y



Scale 1:5

Brake Version

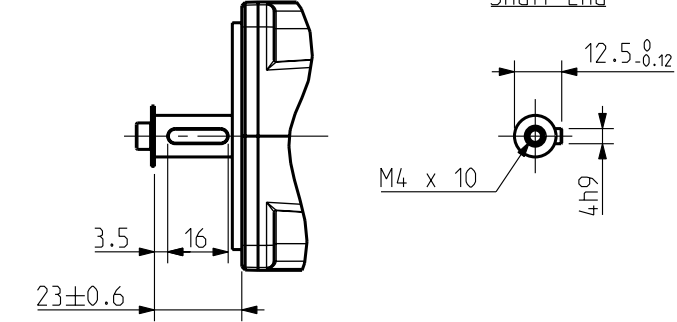
Feedback letter : P/Q



Scale 1:5

Brake Version

Key



Scale 1:2

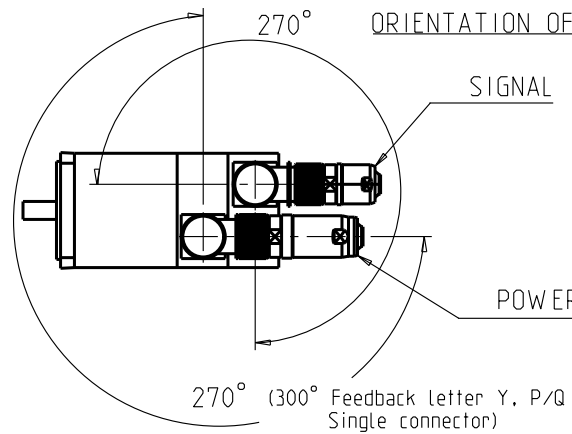
BRAKE Supply voltage : 24V ±10%
Static torque

20 °C	2 Nm
100 °C	1.8 Nm

Weight

	NX310
No Brake	2 Kg
With Brake	2.4 Kg

ORIENTATION OF CONNECTORS



Feedback options (feedback letter)	Resolver (A)	Low cost encoder (X)	Hiperface SKS36 (R)	Hiperface SKM36 (S)	Endat ECN1113 (V)	Endat EQN1125 (W)
L (mm)		147		182		176
L' (mm)		195		230		224

Feedback options (feedback letter)	Hiperface SRS50 (T)	Hiperface SRM50 (U)	Sensorless (Y)	Hiperface DSL SIL2 EKS36 (P)	Hiperface DSL SIL2 EKM36 (Q)
L (mm)		173	147		171
L' (mm)		221	195		219

N X 3 1 0 E _ _ R 7

Torque range (depends on length)

Winding (depends on speed)

0 : Plain Shaft
1 : key

0 : IP 64
1 : IP 65

A : Resolver
P : Hiperface Singleturn DSL SIL2 EKS36
Q : Hiperface Multiturn DSL SIL2 EKM36
R : Hiperface Singleturn SKS36
S : Hiperface Multiturn SKM36
T : Hiperface Singleturn SRS50
U : Hiperface Multiturn SRM50
V : Endat Singleturn ECN1113
W : Endat Multiturn EQN1125
X : Low Cost Encoder
Y : Sensorless

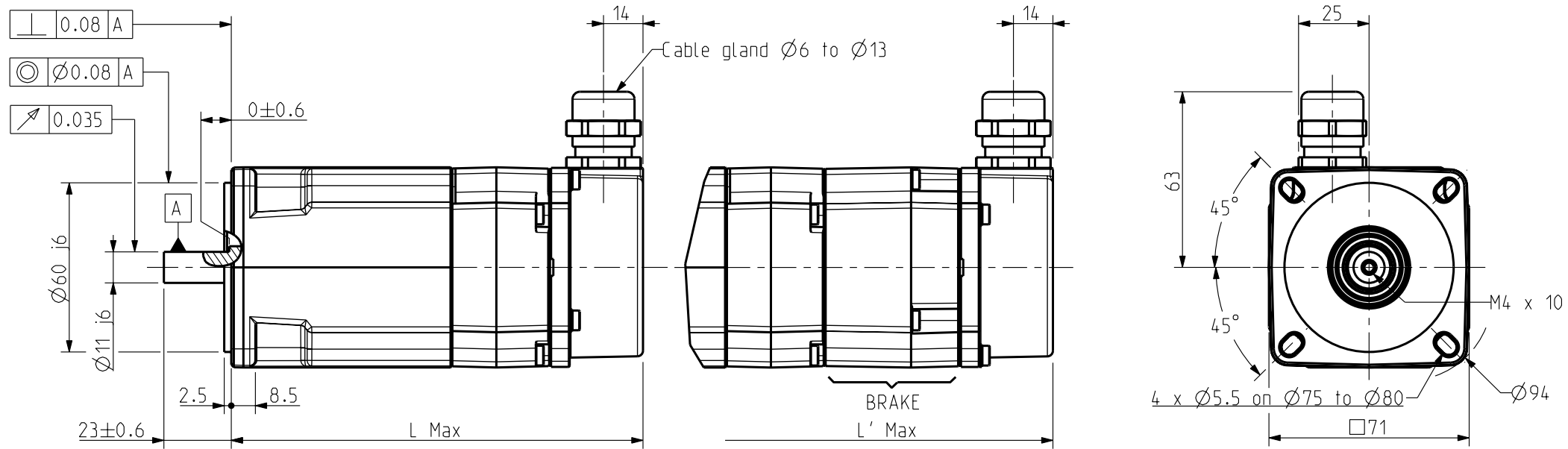
0 : Without Brake
3 : Brake
* : Thermal protection options on drawing 344993

See connectors pin out and encoder settings on drawing 344993

Sheet : 1/3

<p>THIS DOCUMENT CONTAINS INFORMATION THAT IS CONFIDENTIAL AND PROPRIETARY TO PARKER-HANNIFIN CORPORATION. THIS DOCUMENT IS FURNISHED ON THE UNDERSTANDING THAT THE DOCUMENT AND THE INFORMATION IT CONTAINS WILL NOT BE COPIED OR DISCLOSED TO OTHERS OR USED FOR ANY PURPOSE OTHER THAN CONDUCTING BUSINESS WITH PARKER-HANNIFIN CORPORATION, AND WILL BE RETURNED AND ALL FURTHER USE DISCONTINUED UPON REQUEST BY PARKER-HANNIFIN CORPORATION. THE RECIPIENT OF THIS DOCUMENT THROUGH ITS OWN ANALYSIS AND TESTING IS SOLELY RESPONSIBLE FOR MAKING THE FINAL SELECTION OF THE APPLICABLE SYSTEM AND COMPONENTS AND ASSURING THAT ALL PERFORMANCE, DURABLE, MAINTENANCE, SAFETY AND WARNING REQUIREMENTS OF THE APPLICATION ARE MET. COPYRIGHT PARKER-HANNIFIN CORPORATION. YEAR OF COPYRIGHT IS FIRST YEAR INDICATED ON THIS DOCUMENT. ALL RIGHTS RESERVED.</p>	<p>General tolerances DIN ISO 2768 mK</p>	<p>Drawn 03/07/09 YG Visa</p>	<p>Scale 1:2</p>	<p>4 boulevard Eiffel - CS 40090 21604 Longvic Cedex - France www.parker.com</p>	<p>NX300 CONNECTOR VARIANT</p>	<p>Format A3</p>	<p>344167</p>
		<p>Modifications</p>				<p>F E S G I</p>	
		<p>C AM24108 22/04/13 SD B AM23403 10/05/10 OD A AM23337 15/02/10 OD</p>				<p>D AM24474 01/12/15 PR</p>	

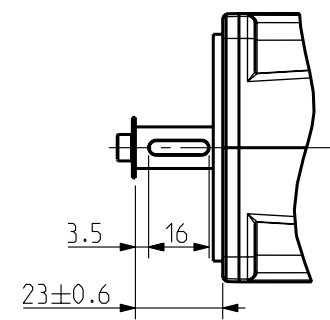
Feedback letter : Y



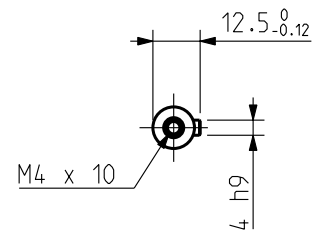
Scale 1:2

Brake Version

Key



Shaft End



BRAKE Supply voltage : 24V ±10%
Static torque

20 °C	2 Nm
100 °C	1.8 Nm

Weight

	NX310
No Brake	2 Kg
With Brake	2.4 Kg

Scale 1:2

Feedback option (feedback letter)	Sensorless (Y)
L (mm)	147
L' (mm)	195

N X 3 1 0 E Y _ R 6 _ _ _

Torque range (depends on length)

Winding (depends on speed)

0 : Plain Shaft
1 : key

0 : IP 64
1 : IP 65

0 : Without Brake
3 : Brake
* : Thermal protection options on drawing 344993

See connectors pin out and encoder settings on drawing 344993

Sheet : 2/3

THIS DOCUMENT CONTAINS INFORMATION THAT IS CONFIDENTIAL AND PROPRIETARY TO PARKER-HANNIFIN CORPORATION. THIS DOCUMENT IS FURNISHED ON THE UNDERSTANDING THAT THE DOCUMENT AND THE INFORMATION IT CONTAINS WILL NOT BE COPIED OR DISCLOSED TO OTHERS OR USED FOR ANY PURPOSE OTHER THAN CONDUCTING BUSINESS WITH PARKER-HANNIFIN CORPORATION, AND WILL BE RETURNED AND ALL FURTHER USE DISCONTINUED UPON REQUEST BY PARKER-HANNIFIN CORPORATION. THE RECIPIENT OF THIS DOCUMENT THROUGH ITS OWN ANALYSIS AND TESTING IS SOLELY RESPONSIBLE FOR MAKING THE FINAL SELECTION OF THE APPLICABLE SYSTEM AND COMPONENTS AND ASSURING THAT ALL PERFORMANCE, DURABILITY, MAINTENANCE, SAFETY AND WARNING REQUIREMENTS OF THE APPLICATION ARE MET. COPYRIGHT PARKER-HANNIFIN CORPORATION. YEAR OF COPYRIGHT IS FIRST YEAR INDICATED ON THIS DOCUMENT. ALL RIGHTS RESERVED.

General tolerances	Drawn	03/07/09	YG	Visa					
DIN ISO 2768 mk	Modifications	C	AM24108	22/04/13	SD				
		B	AM23403	10/05/10	OD				
		A	AM23337	15/02/10	OD	D	AM24474	01/12/15	PR

Scale 1:2

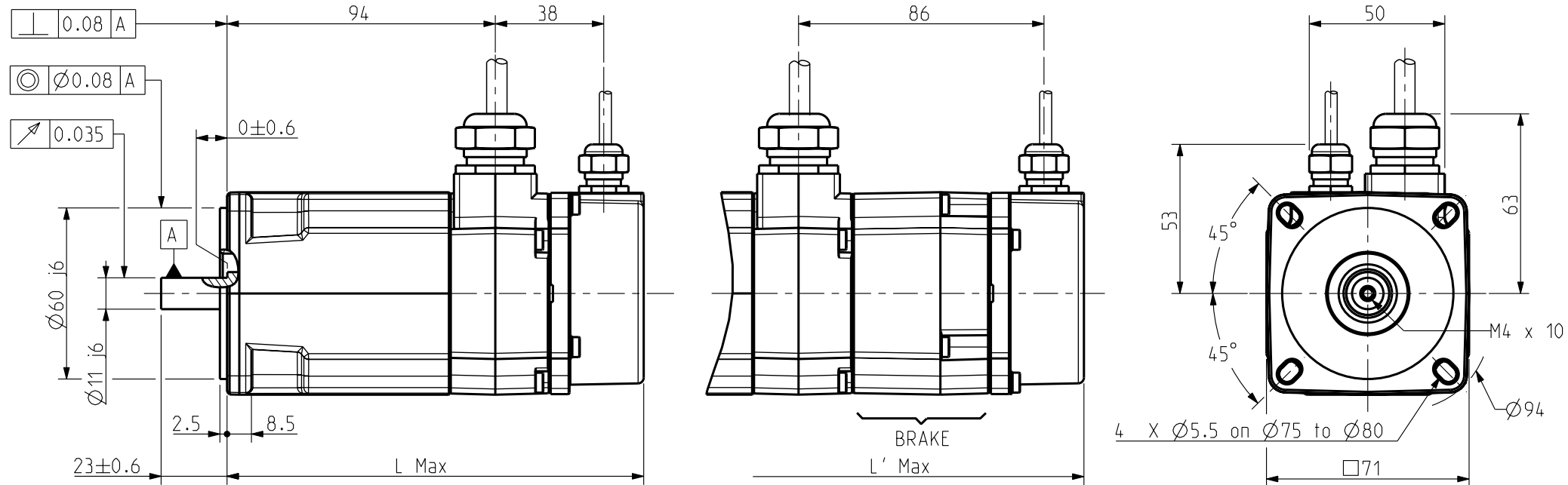
4 boulevard Eiffel - CS 40090
21604 Longvic Cedex - France
www.parker.com

NX300

SENSORLESS VARIANT

Format	F	E	S	G	I
A3	x				
344167					

Feedback letter : A/X

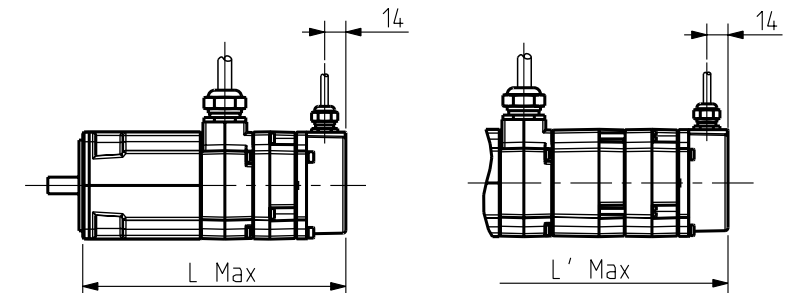


Scale 1:2

Brake Version

FEEDBACK OPTIONS

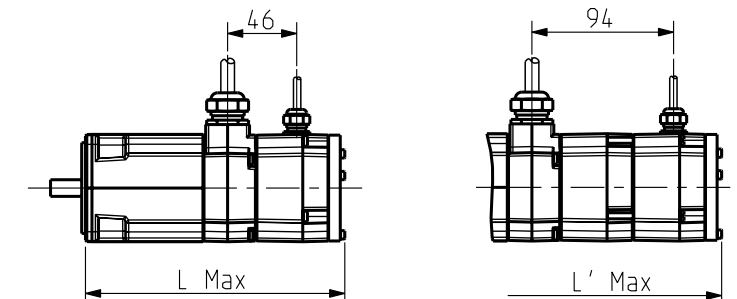
Feedback letter : R/S/V/W



Scale 1:5

Brake Version

Feedback letter : T/U



Scale 1:5

Brake Version

Key

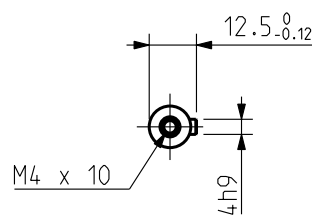
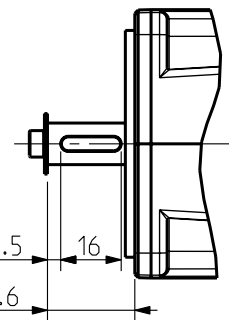
Shaft End

BRAKE Supply voltage : 24V ±10%
Static torque

20 °C	2 Nm
100 °C	1.8 Nm

Weight

	NX310
No Brake	2 Kg
With Brake	2.4 Kg



Scale 1:2

Feedback options (feedback letter)	Resolver (A)	Low cost encoder (X)	Hiperface SKS36 (R)	Hiperface SKM36 (S)	Endat ECN1113 (V)	Endat EQN1125 (W)	Hiperface SRS50 (T)	Hiperface SRM50 (U)
L (mm)		147		182		176		173
L' (mm)		195		230		224		221

N X 3 1 0 E _ _ R 1 _ _ _

Torque range (depends on length)

Winding (depends on speed)

0 : Plain Shaft
1 : key

0 : IP 64
1 : IP 65

A : Resolver
R : Hiperface Singleturn SKS36
S : Hiperface Multiturn SKM36
T : Hiperface Singleturn SRS50
U : Hiperface Multiturn SRM50
V : Endat Singleturn ECN1113
W : Endat Multiturn EQN1125
X : Low Cost Encoder

0 : Without Brake
3 : Brake
* : Thermal protection options on drawing 344993

See connectors pin out and encoder settings on drawing 344993

Sheet : 3/3

THIS DOCUMENT CONTAINS INFORMATION THAT IS CONFIDENTIAL AND PROPRIETARY TO PARKER-HANNIFIN CORPORATION. THIS DOCUMENT IS FURNISHED ON THE UNDERSTANDING THAT THE DOCUMENT AND THE INFORMATION IT CONTAINS WILL NOT BE COPIED OR DISCLOSED TO OTHERS OR USED FOR ANY PURPOSE OTHER THAN CONDUCTING BUSINESS WITH PARKER-HANNIFIN CORPORATION, AND WILL BE RETURNED AND ALL FURTHER USE DISCONTINUED UPON REQUEST BY PARKER-HANNIFIN CORPORATION. THE RECIPIENT OF THIS DOCUMENT THROUGH ITS OWN ANALYSIS AND TESTING IS SOLELY RESPONSIBLE FOR MAKING THE FINAL SELECTION OF THE APPLICABLE SYSTEM AND COMPONENTS AND ASSURING THAT ALL PERFORMANCE, DURABILITY, MAINTENANCE, SAFETY AND WARNING REQUIREMENTS OF THE APPLICATION ARE MET. COPYRIGHT PARKER-HANNIFIN CORPORATION. YEAR OF COPYRIGHT IS FIRST YEAR INDICATED ON THIS DOCUMENT. ALL RIGHTS RESERVED.

General tolerances
DIN ISO 2768 mK

Drawn	03/07/09	YG	Visa					
Modifications	C	AM24108 22/04/13 SD						
	B	AM23403 10/05/10 OD						
	A	AM23337 15/02/10 OD		D	AM24474 01/12/15 PR			

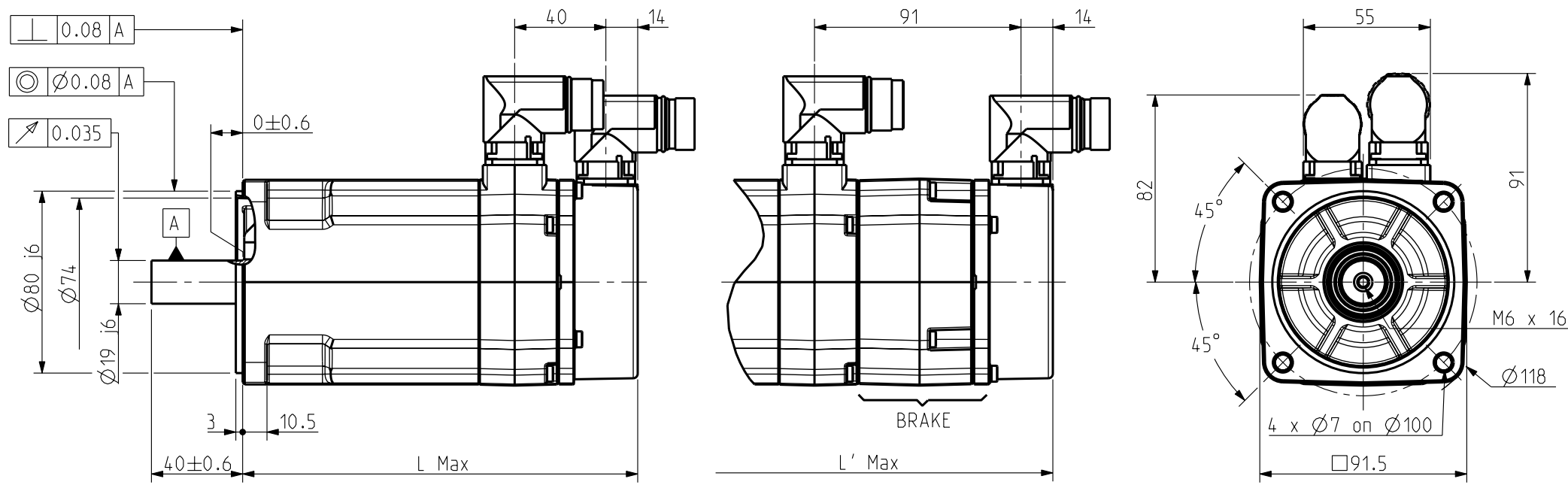
Scale
1:2

Parker
4 boulevard Eiffel - CS 40090
21604 Longvic Cedex - France
www.parker.com

NX300
CABLE VARIANT

Format	F	E	S	G	I
A3	x				
344167					

Feedback letter : A/X

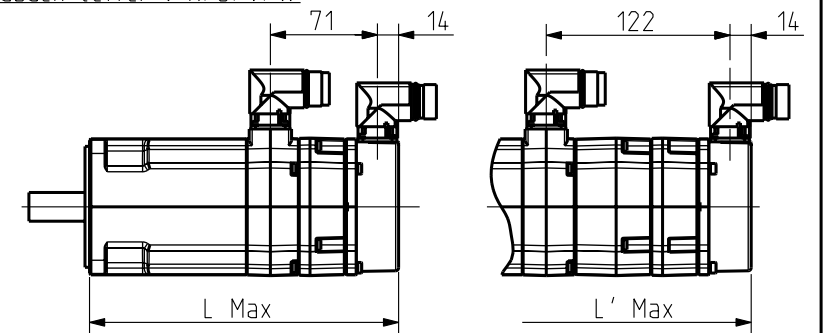


Scale 2:5

Brake Version

FEEDBACK OPTIONS

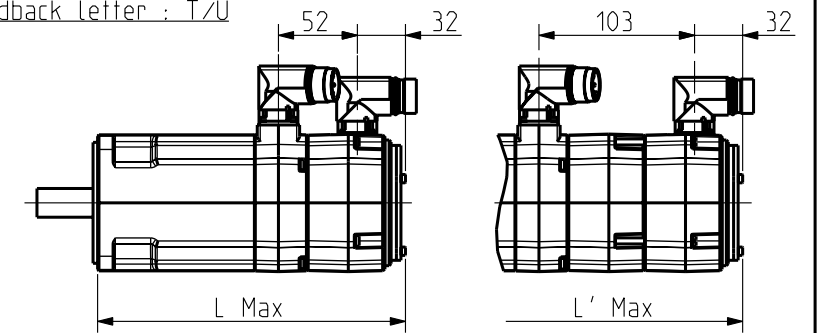
Feedback Letter : R/S/V/W



Scale 1:5

Brake Version

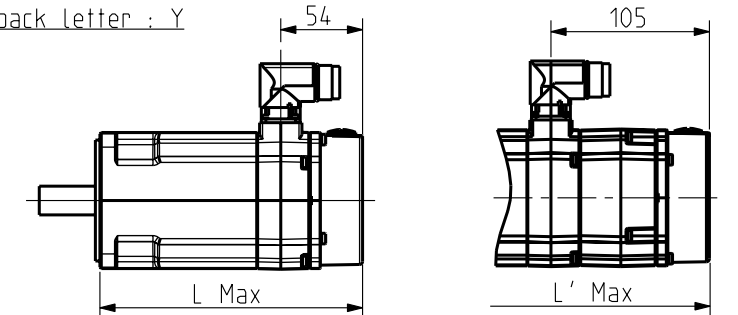
Feedback Letter : T/U



Scale 1:5

Brake Version

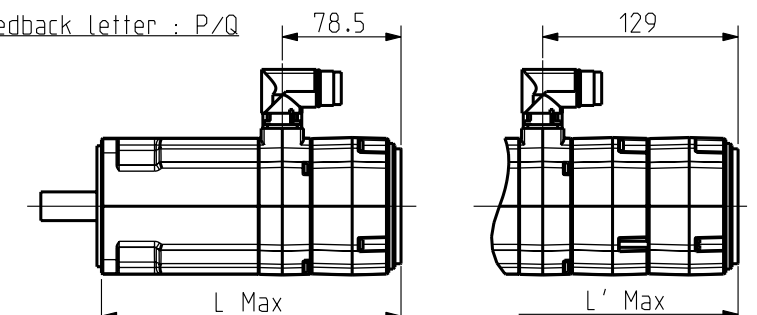
Feedback Letter : Y



Scale 1:5

Brake Version

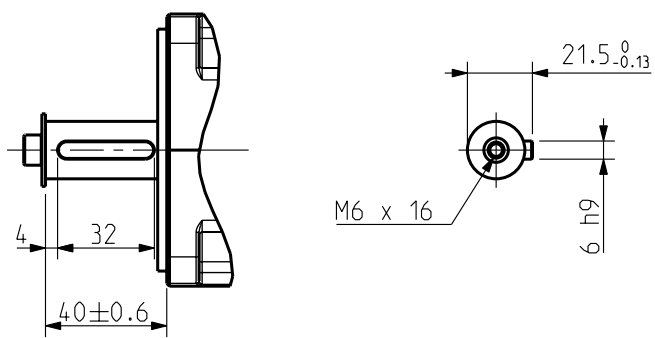
Feedback Letter : P/Q



Scale 1:5

Brake Version

Key



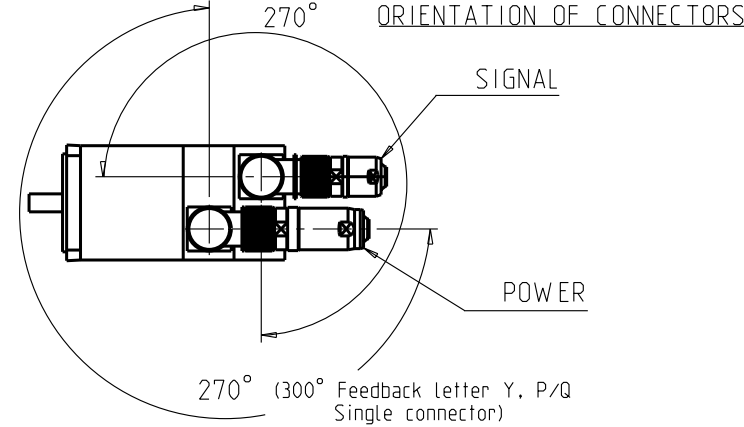
Scale 2:5

BRAKE Supply voltage : 24V ±10%
Static torque

	NX420	NX430
20 °C	5.5 Nm	5.5 Nm
100 °C	4 Nm	4 Nm

Weight

	NX420	NX430
No Brake	3.7 Kg	4.6 Kg
With Brake	4.5 Kg	5.4 Kg



	Feedback options (feedback letter)	Resolver (A)	Low cost encoder (X)	Hiperface SKS36 (R)	Hiperface SKM36 (S)	Endat ECN1113 (V)	Endat EQN1125 (W)
NX420	L (mm)		175				206
	L' (mm)		226				261
NX430	L (mm)		200				231
	L' (mm)		251				286

	Feedback options (feedback letter)	Hiperface SRS50 (T)	Hiperface SRM50 (U)	Sensorless (Y)	Hiperface DSL SIL2 EKS36 (P)	Hiperface DSL SIL2 EKM36 (Q)
NX420	L (mm)		205	175		199.5
	L' (mm)		256	226		250.5
NX430	L (mm)		230	200		224.5
	L' (mm)		281	251		275.5

N X 4 _ _ E _ _ R 7 _ _ _

Torque range (depends on length)

Winding (depends on speed)

0 : Plain Shaft
1 : key

0 : IP 64
1 : IP 65

0 : Without Brake
3 : Brake
* : Thermal protection options on drawing 344993

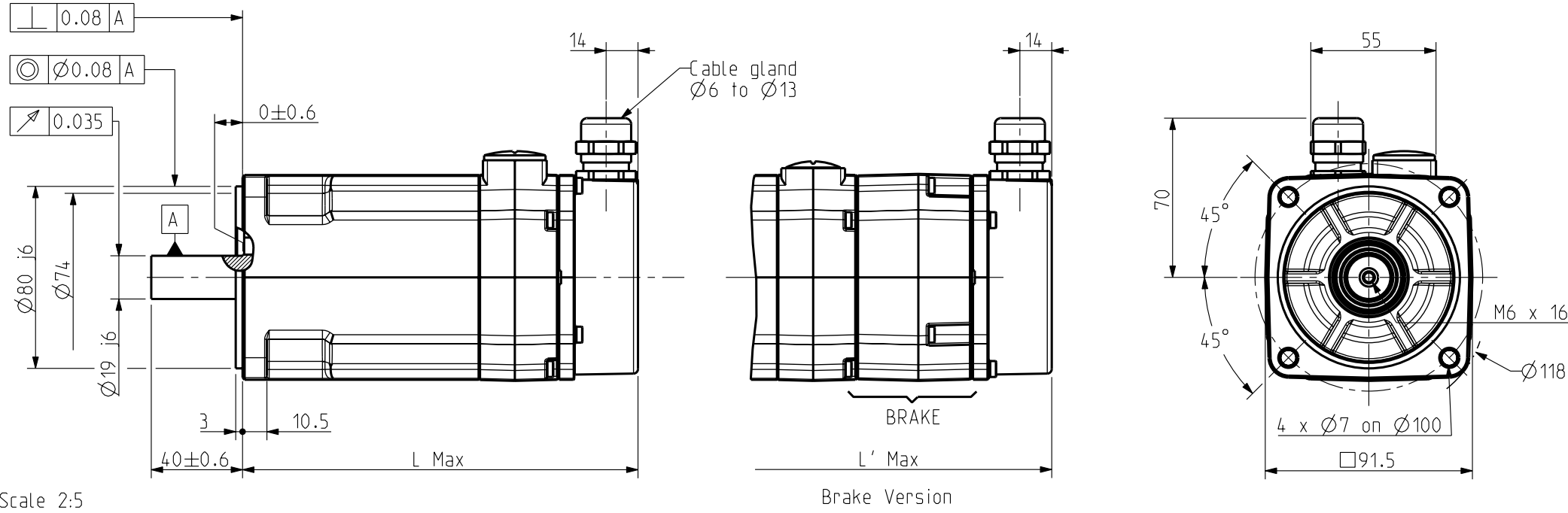
A : Resolver
P : Hiperface Singleturn DSL SIL2 EKS36
Q : Hiperface Multiturn DSL SIL2 EKM36
R : Hiperface Singleturn SKS36
S : Hiperface Multiturn SKM36
T : Hiperface Singleturn SRS50
U : Hiperface Multiturn SRM50
V : Endat Singleturn ECN1113
W : Endat Multiturn EQN1125
X : Low Cost Encoder
Y : Sensorless

See connectors pin out and encoder settings on drawing 344993

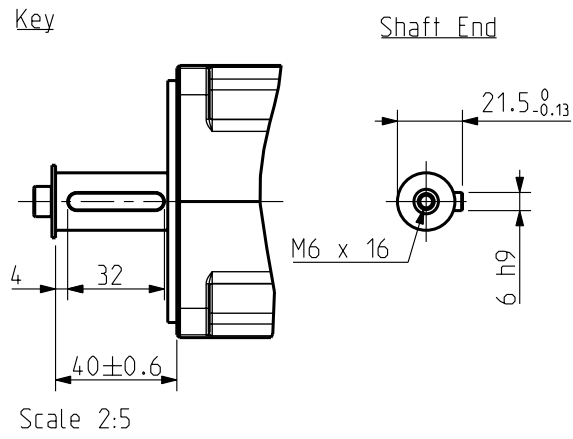
Sheet : 1/4

<p>THIS DOCUMENT CONTAINS INFORMATION THAT IS CONFIDENTIAL AND PROPRIETARY TO PARKER-HANNIFIN CORPORATION. THIS DOCUMENT IS FURNISHED ON THE UNDERSTANDING THAT THE DOCUMENT AND THE INFORMATION IT CONTAINS WILL NOT BE COPIED OR DISCLOSED TO OTHERS OR USED FOR ANY PURPOSE OTHER THAN CONDUCTING BUSINESS WITH PARKER-HANNIFIN CORPORATION, AND WILL BE RETURNED AND ALL FURTHER USE DISCONTINUED UPON REQUEST BY PARKER-HANNIFIN CORPORATION. THE RECIPIENT OF THIS DOCUMENT THROUGH ITS OWN MAINTENANCE AND TESTING IS SOLELY RESPONSIBLE FOR MAKING THE FINAL SELECTION OF THE APPLICABLE SYSTEM AND COMPONENTS AND ASSURING THAT ALL PERFORMANCE, DURABILITY, MAINTENANCE, SAFETY AND WARNING REQUIREMENTS OF THE APPLICATION ARE MET. COPYRIGHT PARKER-HANNIFIN CORPORATION. YEAR OF COPYRIGHT IS FIRST YEAR INDICATED ON THIS DOCUMENT. ALL RIGHTS RESERVED.</p>	<p>General tolerances DIN ISO 2768 mK</p>	<p>Drawn 03/07/09 OD Visa</p>	<p>Scale 2:5</p>	<p>4 boulevard Eiffel - CS 40090 21604 Longvic Cedex - France www.parker.com</p>	<p>NX400 CONNECTOR VARIANT</p>	<p>Format A3</p>	<p>F E S G I x</p>	<p>344178</p>	<p>E</p>	
		<p>Modifications C AM24108 22/04/13 SD</p>								<p>E AM24474 01/12/15 PR</p>
		<p>A AM23337 15/02/10 OD</p>								<p>D AM24229 03/12/13 AH</p>

Feedback letter : Y



Scale 2:5



Scale 2:5

BRAKE Supply voltage : 24V $\pm 10\%$
Static torque

	NX420	NX430
20 °C	5.5 Nm	5.5 Nm
100 °C	4 Nm	4 Nm

Weight

	NX420	NX430
No Brake	3.7 Kg	4.6 Kg
With Brake	4.5 Kg	5.4 Kg

	Feedback options (feedback letter)	Sensorless (Y)
NX420	L (mm)	175
	L' (mm)	226
NX430	L (mm)	200
	L' (mm)	251

N X 4 _ _ E Y _ R 6 _ _ _

Torque range (depends on length)

Winding (depends on speed)

0 : Plain Shaft
1 : key
0 : IP 64
1 : IP 65
0 : Without Brake
3 : Brake
* : Thermal protection options on drawing 344993

See connectors pin out and encoder settings on drawing 344993

Sheet : 2/4

General tolerances
DIN ISO 2768 mk

Drawn	03/07/09	OD	Visa
Modifications	C	AM24108 22/04/13 SD	
	B	AM23403 10/05/10 OD	E AM24474 01/12/15 PR
	A	AM23337 15/02/10 OD	D AM24229 03/12/13 AH

Scale 2:5

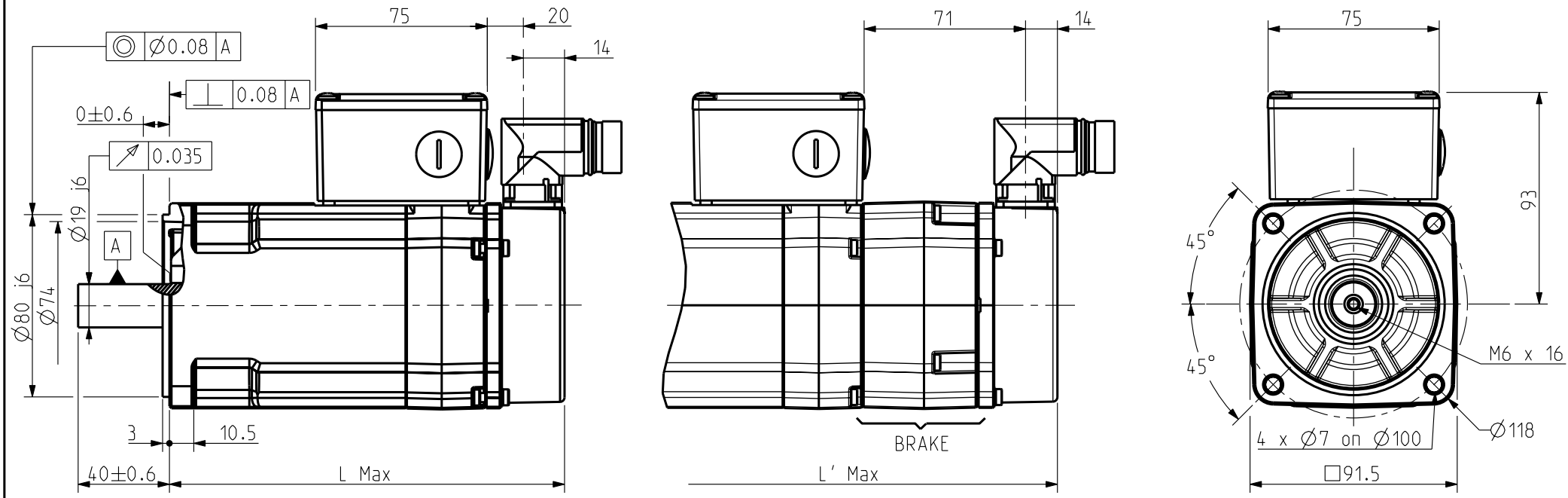
4 boulevard Eiffel - CS 40090
21604 Longvic Cedex - France
www.parker.com

NX400
SENSORLESS VARIANT

Format	F	E	S	G	I
A3		x			

344178

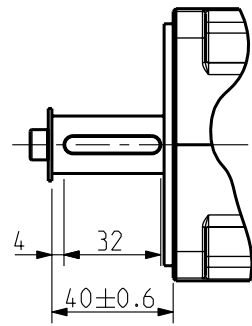
Feedback letter : A/X



Scale 2:5

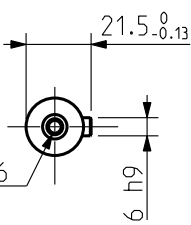
Brake Version

Key



Scale 2:5

Shaft End



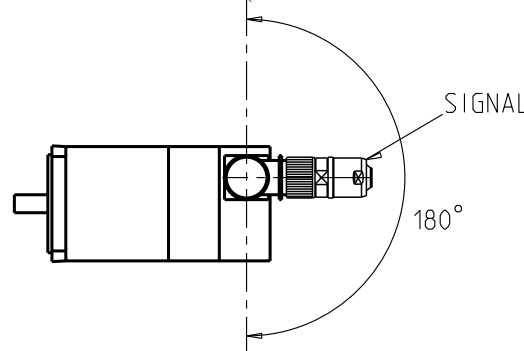
BRAKE Supply voltage : 24V ±10%
Static torque

	NX420	NX430
20 °C	5.5 Nm	5.5 Nm
100 °C	4 Nm	4 Nm

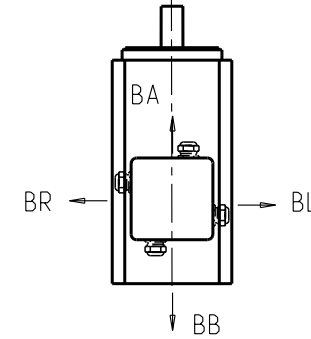
Weight

	NX420	NX430
No Brake	3.7 Kg	4.6 Kg
With Brake	4.5 Kg	5.4 Kg

ORIENTATION OF CONNECTOR



POWER TERMINAL BOX ORIENTATION



Standard orientation : BR

	Feedback options (feedback letter)	Resolver (A)	Low cost encoder (X)
NX420	L (mm)	175	
	L' (mm)	226	
NX430	L (mm)	200	
	L' (mm)	251	

N X 4 _ _ E _ _ R 6 _ _ _

Torque range (depends on length)

Winding (depends on speed)

0 : Plain Shaft
1 : key

0 : IP 64
1 : IP 65

A : Resolver
X : Low Cost Encoder

0 : Without Brake
3 : Brake
* : Thermal protection options on drawing 344993

See connectors pin out and encoder settings on drawing 344993

Sheet : 3/4

General tolerances
DIN ISO 2768 mK

Drawn	03/07/09	OD	Visa					
Modifications	C	AM24108 22/04/13 SD						
	B	AM23403 10/05/10 OD		E	AM24474 01/12/15 PR			
	A	AM23337 15/02/10 OD		D	AM24229 03/12/13 AH			

Scale 2:5

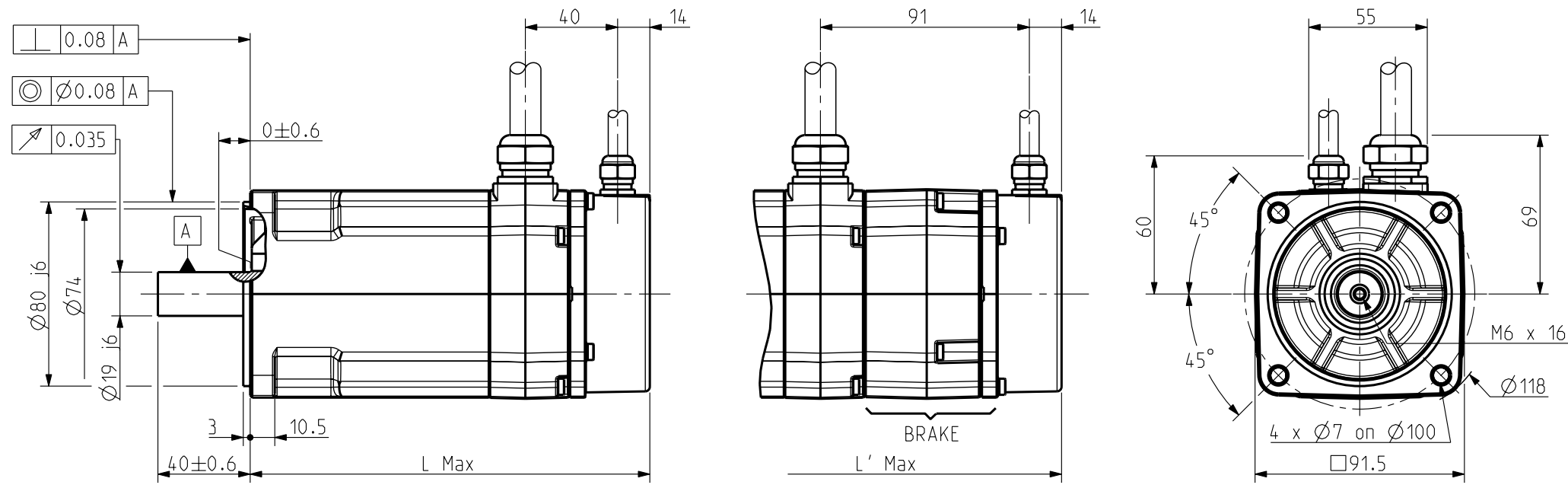
4 boulevard Eiffel - CS 40090
21604 Longvic Cedex - France
www.parker.com

NX400
TERMINAL BOX VARIANT

Format	F	E	S	G	I
A3		x			
344178					

E

Feedback letter : A/X

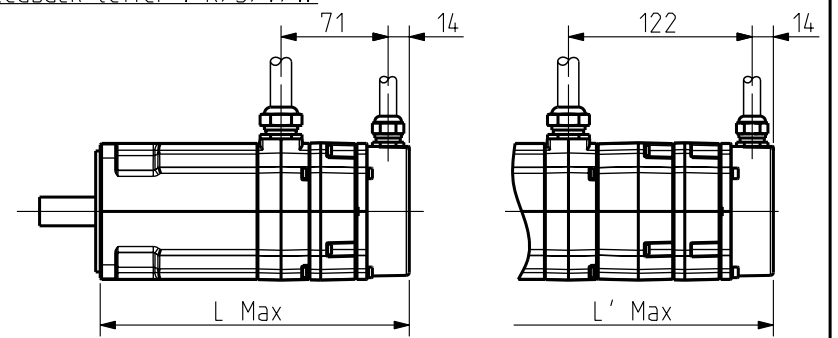


Scale 2:5

Brake Version

FEEDBACK OPTIONS

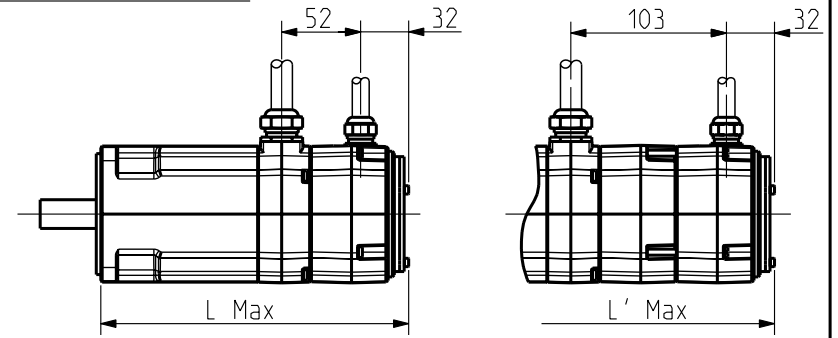
Feedback letter : R/S/V/W



Scale 1:5

Brake Version

Feedback letter : T/U

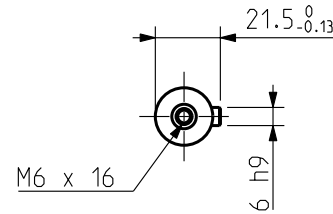
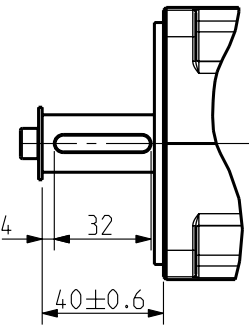


Scale 1:5

Brake Version

Key

Shaft End



BRAKE Supply voltage : 24V ±10%
Static torque

	NX420	NX430
20 °C	5.5 Nm	5.5 Nm
100 °C	4 Nm	4 Nm

Weight

	NX420	NX430
No Brake	3.7 Kg	4.6 Kg
With Brake	4.5 Kg	5.4 Kg

Scale 2:5

	Feedback options (feedback letter)	Resolver (A)	Low cost encoder (X)	Hiperface SKS36 (R)	Hiperface SKM36 (S)	Endat ECN1113 (V)	Endat EQN1125 (W)	Hiperface SRS50 (T)	Hiperface SRM50 (U)
NX420	L (mm)	175				206			205
	L' (mm)	226				261			256
NX430	L (mm)	200				231			230
	L' (mm)	251				286			281

N X 4 _ _ E _ _ R 1 _ _

Torque range
(depends on length)

Winding
(depends on speed)

0 : Plain Shaft
1 : key

0 : IP 64
1 : IP 65

A : Resolver
R : Hiperface Singleturn SKS36
S : Hiperface Multiturn SKM36
T : Hiperface Singleturn SRS50
U : Hiperface Multiturn SRM50
V : Endat Singleturn ECN1113
W : Endat Multiturn EQN1125
X : Low Cost Encoder

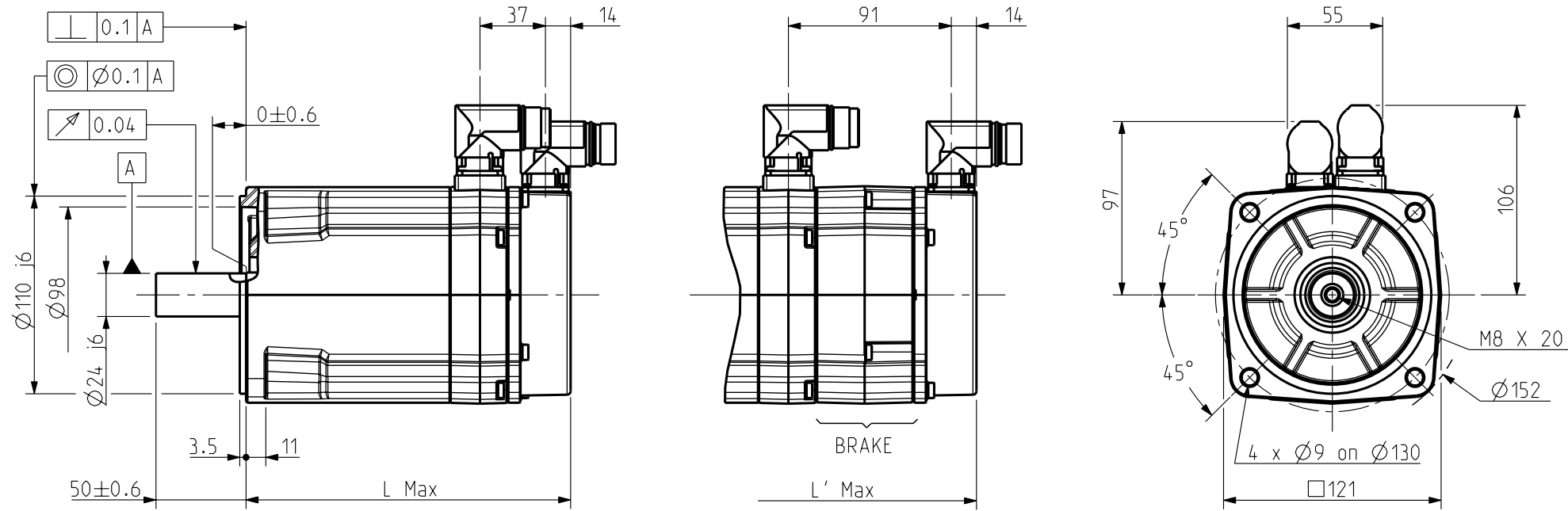
0 : Without Brake
3 : Brake
* : Thermal protection
options on drawing
344993

See connectors pin out and encoder settings on drawing 344993

Sheet : 4/4

<p>THIS DOCUMENT CONTAINS INFORMATION THAT IS CONFIDENTIAL AND PROPRIETARY TO PARKER-HANNIFIN CORPORATION. THIS DOCUMENT IS FURNISHED ON THE UNDERSTANDING THAT THE DOCUMENT AND THE INFORMATION IT CONTAINS WILL NOT BE COPIED OR DISCLOSED TO OTHERS OR USED FOR ANY PURPOSE OTHER THAN CONDUCTING BUSINESS WITH PARKER-HANNIFIN CORPORATION, AND WILL BE RETURNED AND ALL FURTHER USE DISCONTINUED UPON REQUEST BY PARKER-HANNIFIN CORPORATION. THE RECIPIENT OF THIS DOCUMENT THROUGH ITS OWN ANALYSIS AND TESTING IS SOLELY RESPONSIBLE FOR MAKING THE FINAL SELECTION OF THE APPLICABLE SYSTEM AND COMPONENTS AND ASSURING THAT ALL PERFORMANCE, DURABLE, MAINTENANCE, SAFETY AND WARNING REQUIREMENTS OF THE APPLICATION ARE MET. COPYRIGHT PARKER-HANNIFIN CORPORATION. YEAR OF COPYRIGHT IS FIRST YEAR INDICATED ON THIS DOCUMENT. ALL RIGHTS RESERVED.</p>	<p>General tolerances DIN ISO 2768 mK</p>	<p>Drawn 03/07/09 OD Visa</p>	<p>Scale 2:5</p>	<p>4 boulevard Eiffel - CS 40090 21604 Longvic Cedex - France www.parker.com</p>	<p>NX400 CABLE VARIANT</p>	<p>Format A3</p>	<p>F E S G I</p>	<p>344178</p>	<p>E</p>
		<p>Modifications C AM24108 22/04/13 SD</p>				<p>E AM24474 01/12/15 PR</p>	<p>x</p>		
		<p>B AM23403 10/05/10 OD A AM23337 15/02/10 OD</p>				<p>D AM24229 03/12/13 AH</p>			

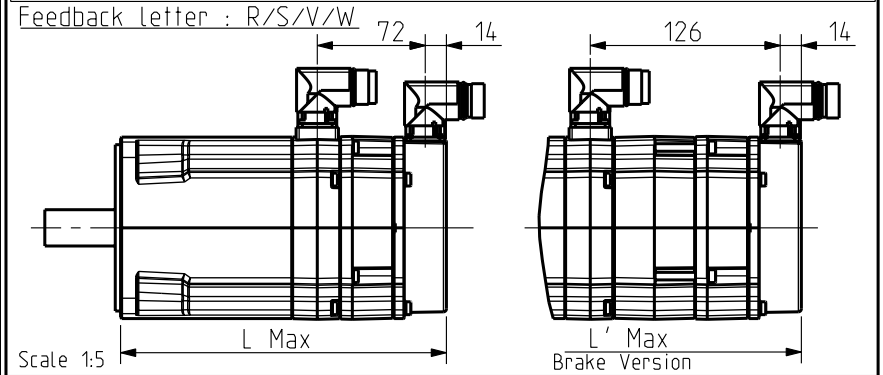
Feedback letter : A/X



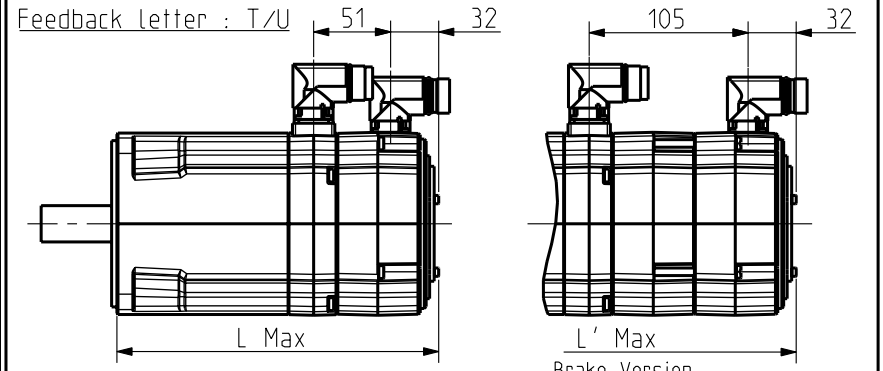
Scale 3:10

Brake Version

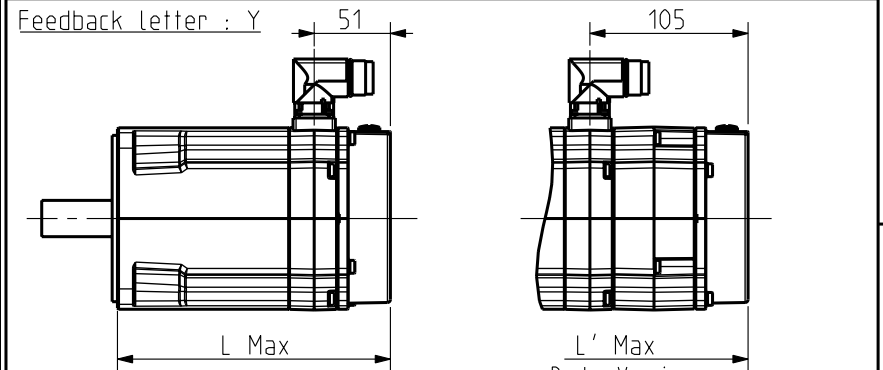
FEEDBACK OPTIONS



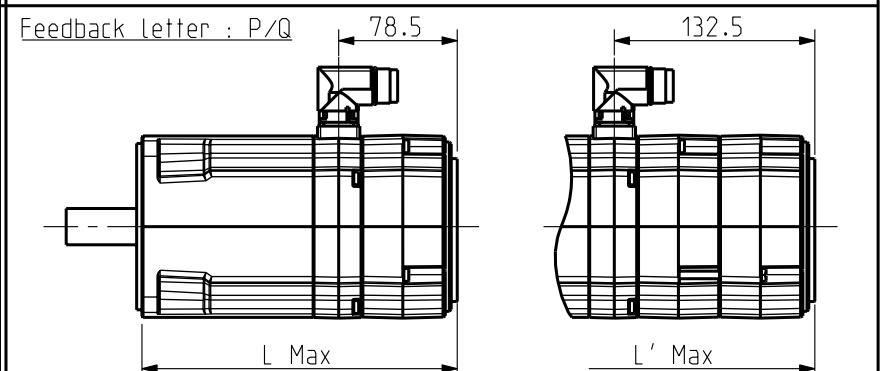
Scale 1:5



Scale 1:5

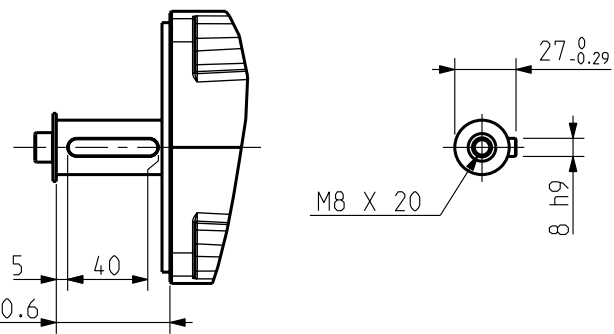


Scale 1:5



Scale 1:5

KEY



Scale 3:10

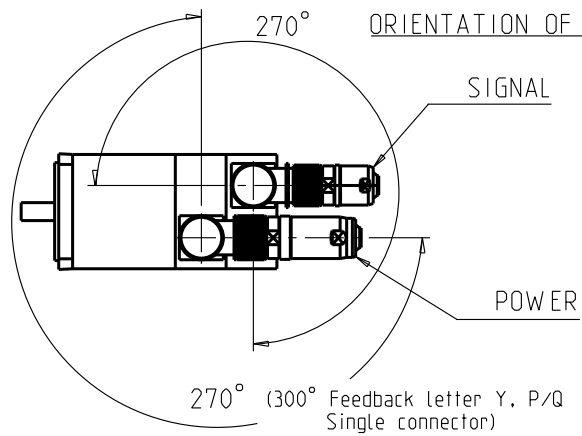
BRAKE Supply voltage : 24V ±10%
Static torque

	NX620	NX630
20°C	12 Nm	12 Nm
100°C	8 Nm	8 Nm

WEIGHT

	NX620	NX630
No brake	6.9 Kg	8.8 Kg
With brake	8 Kg	10 Kg

ORIENTATION OF CONNECTORS



	Feedback options (feedback letter)	Resolver (A)	Low cost encoder (X)	Hiperface SKS36 (R)	Hiperface SKM36 (S)	Endat ECN1113 (V)	Endat EQN1125 (W)
NX620	L (mm)		181				216
	L' (mm)		236				271
NX630	L (mm)		210				245
	L' (mm)		265				300

	Feedback options (feedback letter)	Hiperface SRS50 (T)	Hiperface SRM50 (U)	Sensorless (Y)	Hiperface DSL SIL2 EKS36 (P)	Hiperface DSL SIL2 EKM36 (Q)
NX620	L (mm)		214	181		209.5
	L' (mm)		269	236		264
NX630	L (mm)		243	210		238.5
	L' (mm)		298	265		293

N X 6 _ _ E _ _ R 7 _ _ _

Torque range (depends on length)

Winding (depends on speed)

0 : Plain Shaft
1 : key

0 : IP 64
1 : IP 65

0 : Without Brake
3 : Brake
* : Thermal protection options on drawing 344993

A : Resolver
P : Hiperface Singleturn DSL SIL2 EKS36
Q : Hiperface Multiturn DSL SIL2 EKM36
R : Hiperface Singleturn SKS36
S : Hiperface Multiturn SKM36
T : Hiperface Singleturn SRS50
U : Hiperface Multiturn SRM50
V : Endat Singleturn ECN1113
W : Endat Multiturn EQN1125
X : Low Cost Encoder
Y : Sensorless

See connectors pin out and encoder settings on drawing 344993

sheet : 1/3

General tolerances
DIN ISO 2768 mK

Drawn	09/07/09	PR	Visa				
Modifications	C	AM24229 03/12/13 AH					
	B	AM24108 22/04/13 SD					
	A	AM23337 15/02/10 OD		D	AM24474 01/12/15 PR		

Scale 3:10

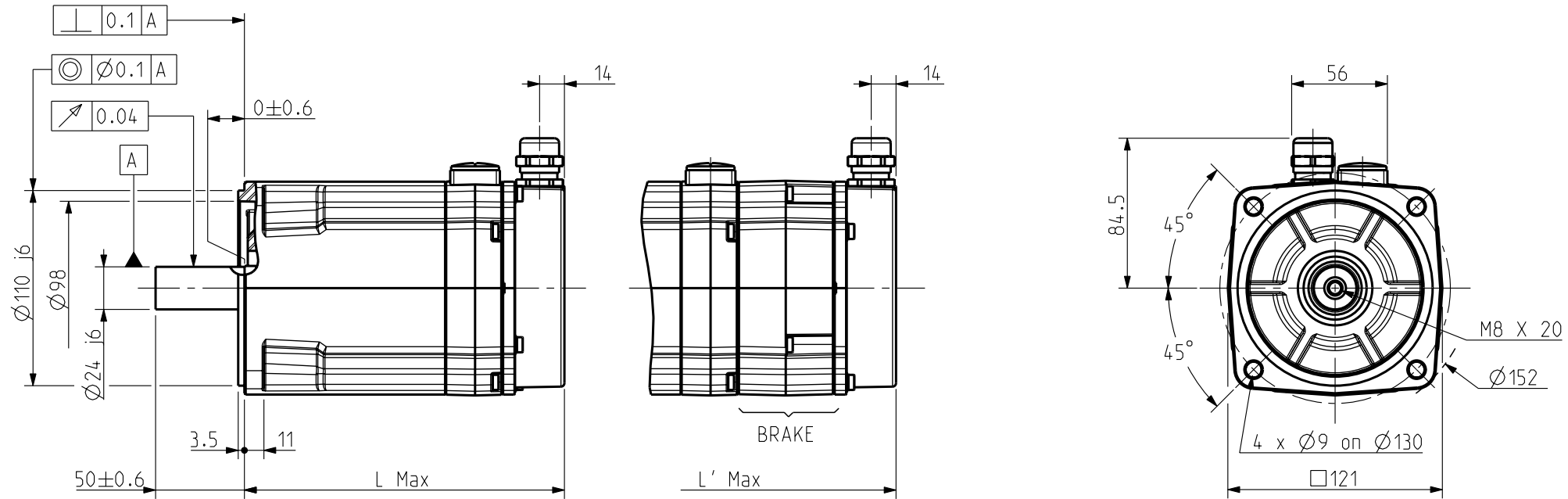
4 boulevard Eiffel - CS 40090
21604 Longvic Cedex - France
www.parker.com

NX600
CONNECTOR VARIANT

Format	A3	F	E	S	G	I	
		x					
							344189

THIS DOCUMENT CONTAINS INFORMATION THAT IS CONFIDENTIAL AND PROPRIETARY TO PARKER-HANNIFIN CORPORATION. THIS DOCUMENT IS FURNISHED ON THE UNDERSTANDING THAT THE DOCUMENT AND THE INFORMATION IT CONTAINS WILL NOT BE COPIED OR DISCLOSED TO OTHERS OR USED FOR ANY PURPOSE OTHER THAN CONDUCTING BUSINESS WITH PARKER-HANNIFIN CORPORATION, AND WILL BE RETURNED AND ALL FURTHER USE DISCONTINUED UPON REQUEST BY PARKER-HANNIFIN CORPORATION. THE RECIPIENT OF THIS DOCUMENT THROUGH ITS OWN ANALYSIS AND TESTING IS SOLELY RESPONSIBLE FOR MAKING THE FINAL SELECTION OF THE APPLICABLE SYSTEM AND COMPONENTS AND ASSURING THAT ALL PERFORMANCE, DURABILITY, MAINTENANCE, SAFETY AND WARNING REQUIREMENTS OF THE APPLICATION ARE MET. COPYRIGHT PARKER-HANNIFIN CORPORATION. YEAR OF COPYRIGHT IS FIRST YEAR INDICATED ON THIS DOCUMENT. ALL RIGHTS RESERVED.

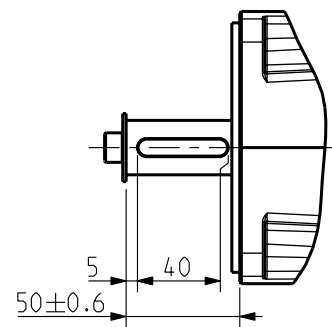
Feedback letter : Y



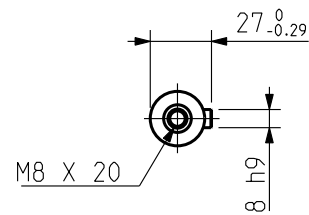
Scale 3:10

Brake Version

KEY



SHAFT END



BRAKE Supply voltage : 24V ±10%
Static torque

	NX620	NX630
20°C	12 Nm	12 Nm
100°C	8 Nm	8 Nm

WEIGHT

	NX620	NX630
No brake	6.9 Kg	8.8 Kg
With brake	8 Kg	10 Kg

Scale 3:10

	Feedback options (feedback letter)	Sensorless (Y)
NX620	L (mm)	181
	L' (mm)	236
NX630	L (mm)	210
	L' (mm)	265

N X 6 _ _ E Y _ R 6 _ _ _

Torque range (depends on length) Winding (depends on speed)

0 : Plain Shaft
1 : key
0 : IP 64
1 : IP 65
0 : Without Brake

* : Thermal protection options on drawing 344993

See connectors pin out and encoder settings on drawing 344993

sheet : 2/3

THIS DOCUMENT CONTAINS INFORMATION THAT IS CONFIDENTIAL AND PROPRIETARY TO PARKER-HANNIFIN CORPORATION. THIS DOCUMENT IS FURNISHED ON THE UNDERSTANDING THAT THE DOCUMENT AND THE INFORMATION IT CONTAINS WILL NOT BE COPIED OR DISCLOSED TO OTHERS OR USED FOR ANY PURPOSE OTHER THAN CONDUCTING BUSINESS WITH PARKER-HANNIFIN CORPORATION, AND WILL BE RETURNED AND ALL FURTHER USE DISCONTINUED UPON REQUEST BY PARKER-HANNIFIN CORPORATION. THE RECIPIENT OF THIS DOCUMENT THROUGH ITS OWN ANALYSIS AND TESTING IS SOLELY RESPONSIBLE FOR MAKING THE FINAL SELECTION OF THE APPLICABLE SYSTEM AND COMPONENTS AND ASSURING THAT ALL PERFORMANCE, DURABILITY, MAINTENANCE, SAFETY AND WARNING REQUIREMENTS OF THE APPLICATION ARE MET. COPYRIGHT PARKER-HANNIFIN CORPORATION. YEAR OF COPYRIGHT IS FIRST YEAR INDICATED ON THIS DOCUMENT. ALL RIGHTS RESERVED.

General tolerances
DIN ISO 2768 mK

Drawn	09/07/09	PR	Visa					
Modifications	C	AM24229 03/12/13 AH						
	B	AM24108 22/04/13 SD						
	A	AM23337 15/02/10 OD	D	AM24474 01/12/15 PR				

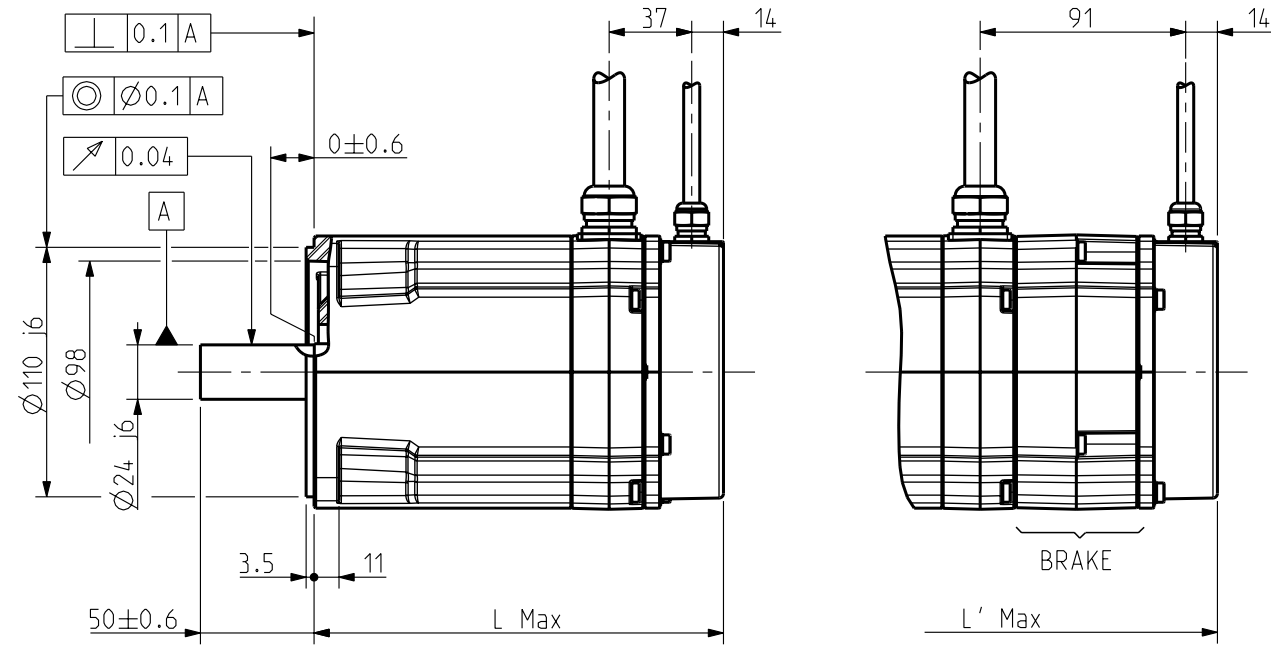
Scale 3:10

4 boulevard Eiffel - CS 40090
21604 Longvic Cedex - France
www.parker.com

NX600
SENSORLESS VARIANT

Format	F	E	S	G	I
A3	x				
344189					

Feedback letter : A/X

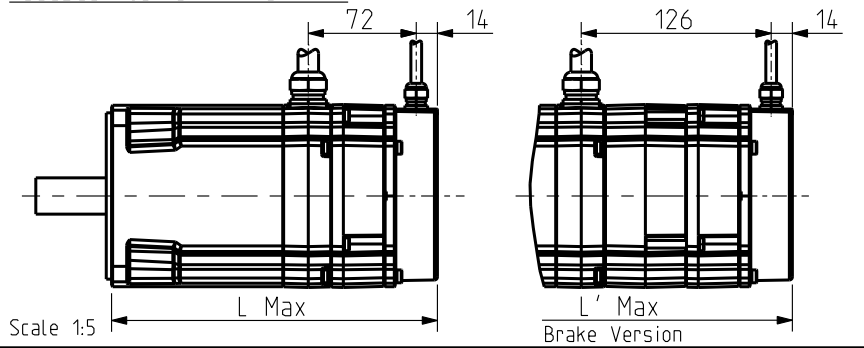


Scale 3:10

Brake Version

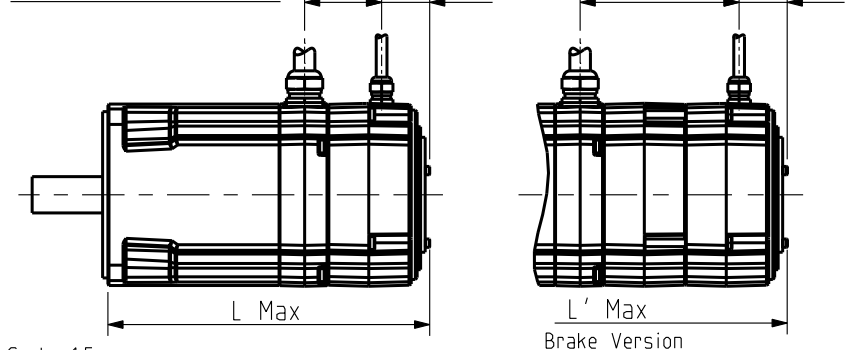
FEEDBACK OPTIONS

Feedback Letter : R/S/V/W



Scale 1:5

Feedback Letter : T/U



Scale 1:5

KEY

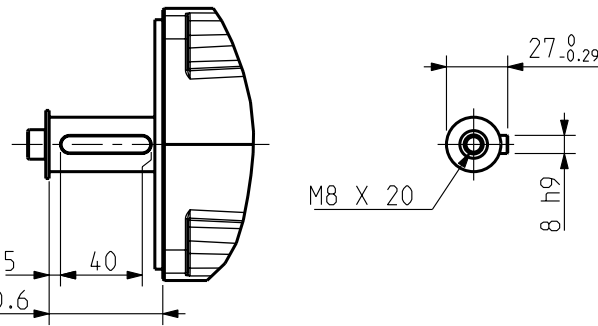
SHAFT END

BRAKE Supply voltage : 24V ±10%
Static torque

	NX620	NX630
20°C	12 Nm	12 Nm
100°C	8 Nm	8 Nm

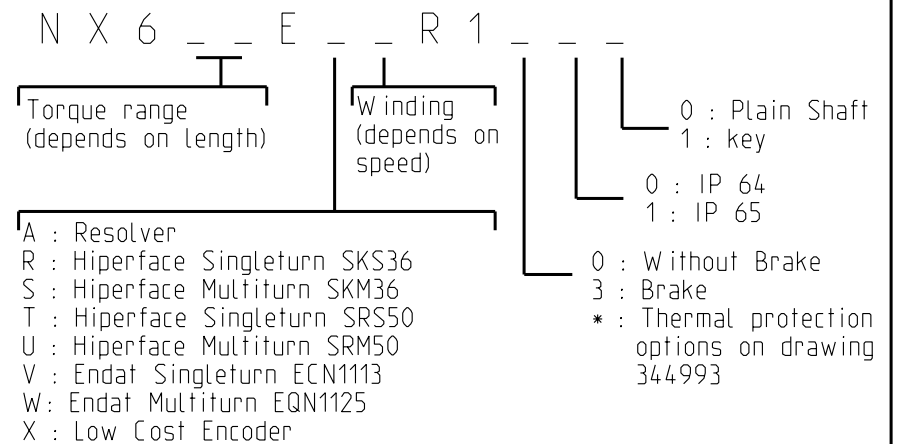
WEIGHT

	NX620	NX630
No brake	6.9 Kg	8.8 Kg
With brake	8 Kg	10 Kg



Scale 3:10

	Feedback options (feedback letter)	Resolver (A)	Low Cost Encoder (X)	Hiperface SKS36 (R)	Hiperface SKM36 (S)	Endat ECN1113 (V)	Endat EQN1125 (W)	Hiperface SRS50 (T)	Hiperface SRM50 (U)	Sensorless (Y)
NX620	L (mm)	181			216			214		181
	L' (mm)	236			271			269		236
NX630	L (mm)	210			245			243		210
	L' (mm)	265			300			298		265



See connectors pin out and encoder settings on drawing 344993

sheet : 3/3

<p>THIS DOCUMENT CONTAINS INFORMATION THAT IS CONFIDENTIAL AND PROPRIETARY TO PARKER-HANNIFIN CORPORATION. THIS DOCUMENT IS FURNISHED ON THE UNDERSTANDING THAT THE DOCUMENT AND THE INFORMATION IT CONTAINS WILL NOT BE COPIED OR DISCLOSED TO OTHERS OR USED FOR ANY PURPOSE OTHER THAN CONDUCTING BUSINESS WITH PARKER-HANNIFIN CORPORATION, AND WILL BE RETURNED AND ALL FURTHER USE DISCONTINUED UPON REQUEST BY PARKER-HANNIFIN CORPORATION. THE RECIPIENT OF THIS DOCUMENT THROUGH ITS OWN ANALYSIS AND TESTING IS SOLELY RESPONSIBLE FOR MAKING THE FINAL SELECTION OF THE APPLICABLE SYSTEM AND COMPONENTS AND ASSURING THAT ALL PERFORMANCE, DURABILITY, MAINTENANCE, SAFETY AND WARNING REQUIREMENTS OF THE APPLICATION ARE MET. COPYRIGHT PARKER-HANNIFIN CORPORATION. YEAR OF COPYRIGHT IS FIRST YEAR INDICATED ON THIS DOCUMENT. ALL RIGHTS RESERVED.</p>	General tolerances	Drawn	09/07/09	PR	Visa																
	DIN ISO 2768 mK	Modifications	C	AM24229 03/12/13 AH																	
		B	AM24108 22/04/13 SD																		
		A	AM23337 15/02/10 OD			D	AM24474 01/12/15 PR														



NX600

CABLE VARIANT

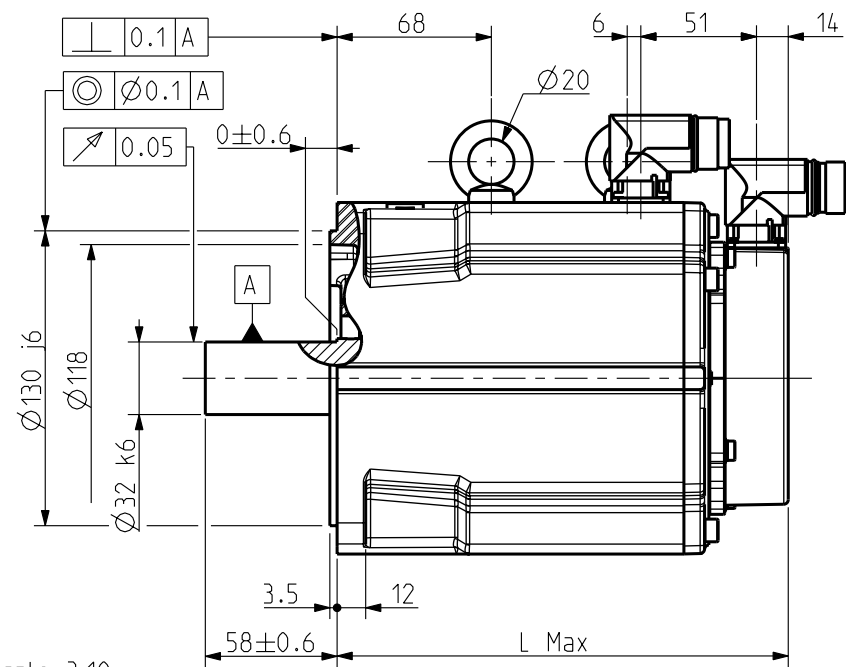
Format A3

F E S G I

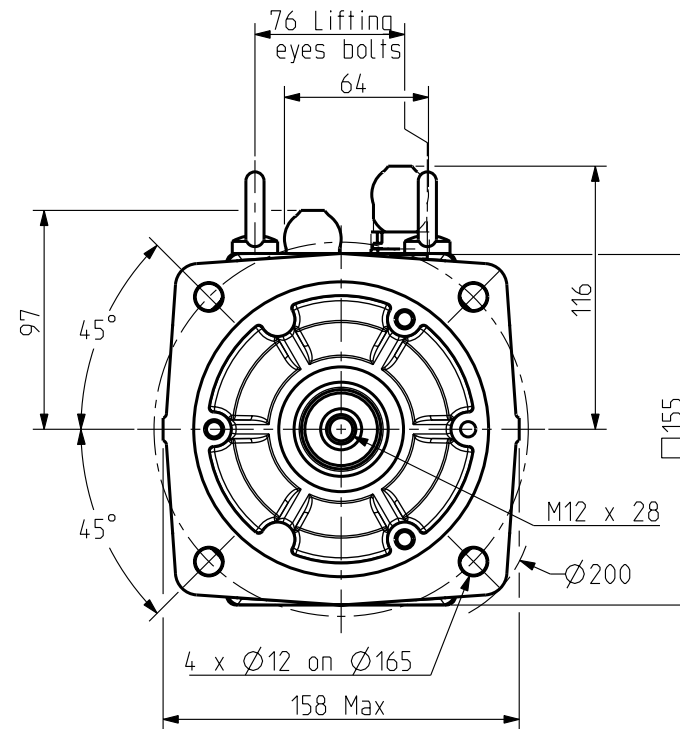
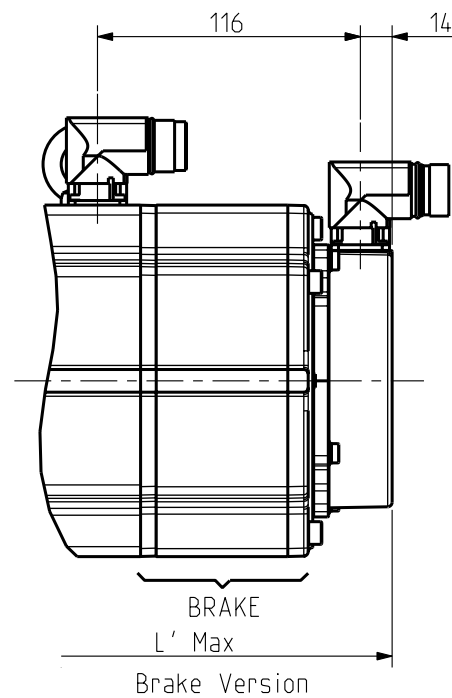
x

344189

Feedback letter : A/X

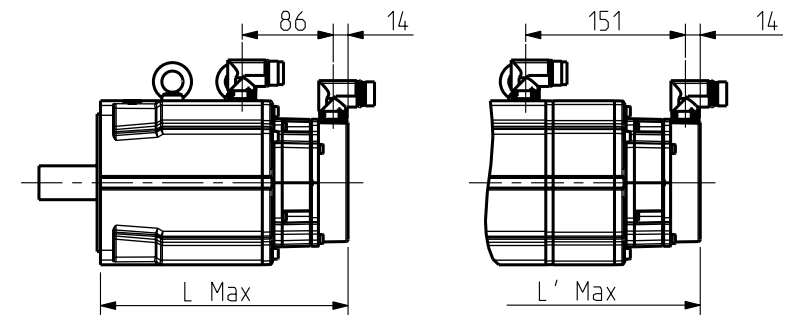


Scale 3:10



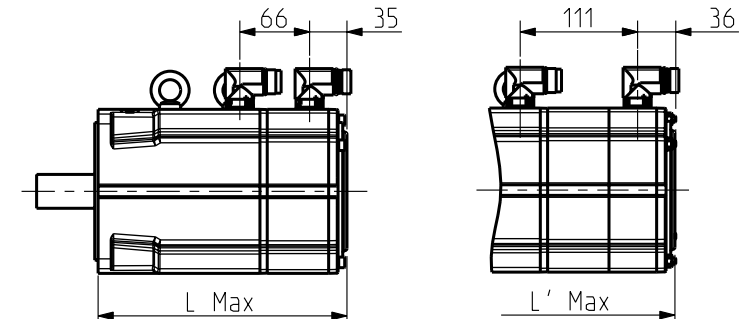
FEEDBACK OPTIONS

Feedback letter : R/S/V/W



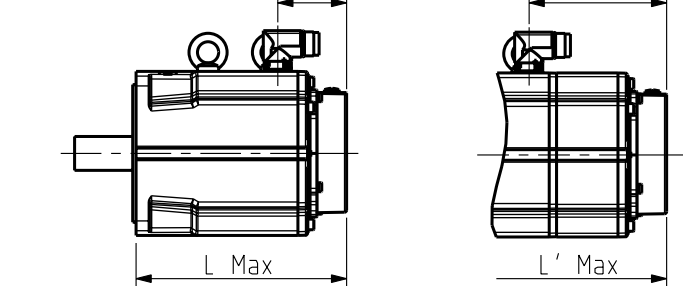
Scale 7:50

Feedback letter : T/U



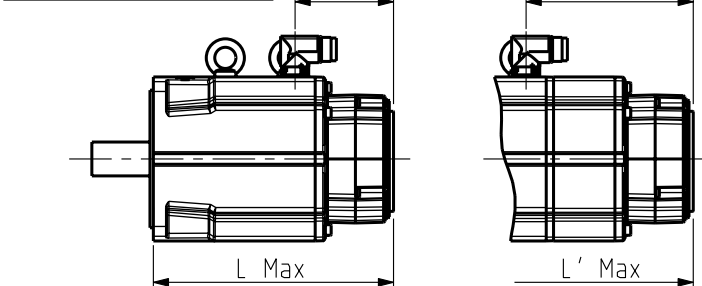
Scale 7:50

Feedback letter : Y

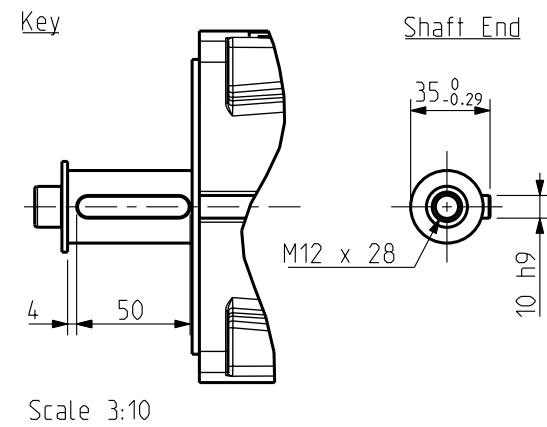


Scale 7:50

Feedback letter : P/Q



Scale 7:50

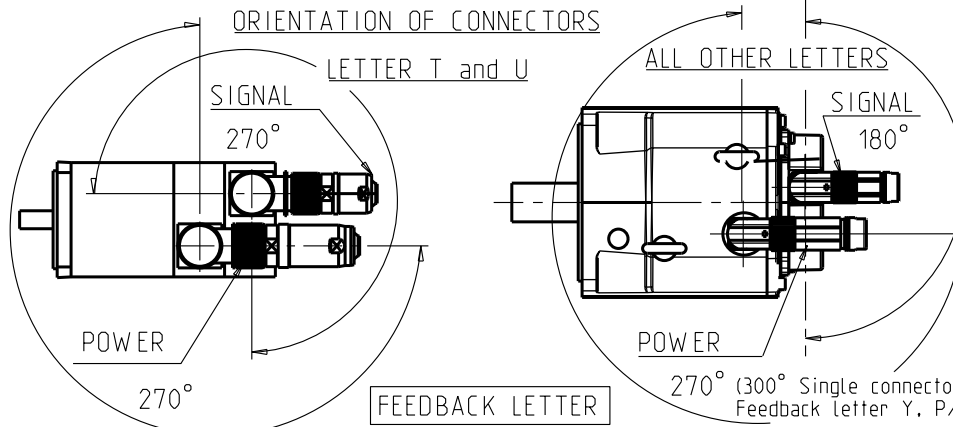


BRAKE Supply voltage : 24V ±10%
Static torque

	NX820	NX840	NX860
20°C	36 Nm	36 Nm	36 Nm
100°C	32 Nm	32 Nm	32 Nm

Weight

	NX820	NX840	NX860
No Brake	13 Kg	20 Kg	27 Kg
With Brake	16.5 Kg	23.5 Kg	30.5 Kg



	Feedback options (feedback letter)	Resolver (A)	Low cost encoder (X)	Hiperface SKS36 (R)	Hiperface SKM36 (S)	Endat ECN1113 (V)	Endat EQN1125 (W)
NX820	L (mm)	200				235	
	L' (mm)	266				301	
NX840	L (mm)	260				295	
	L' (mm)	326				361	
NX860	L (mm)	320				355	
	L' (mm)	386				421	

	Feedback options (feedback letter)	Hiperface SRS50 (T)	Hiperface SRM50 (U)	Sensorless (Y)	Hiperface DSL SIL2 EKS36 (P)	Hiperface DSL SIL2 EKM36 (Q)
NX820	L (mm)	236		200		228
	L' (mm)	282		266		294
NX840	L (mm)	296		260		288
	L' (mm)	342		326		354
NX860	L (mm)	356		320		348
	L' (mm)	402		386		414

N X 8 _ _ E _ _ R 7

Torque range (depends on length) Winding (depends on speed)

- A : Resolver
- P : Hiperface Singleturn DSL SIL2 EKS36
- Q : Hiperface Multiturn DSL SIL2 EKM36
- R : Hiperface Singleturn SKS36
- S : Hiperface Multiturn SKM36
- T : Hiperface Singleturn SRS50
- U : Hiperface Multiturn SRM50
- V : Endat Singleturn ECN1113
- W : Endat Multiturn EQN1125
- X : Low Cost Encoder
- Y : Sensorless

See connectors pin out and encoder settings on drawing 344993

Sheet:1/4

General tolerances
DIN ISO 2768 mK

Drawn	09/07/09	YG	Visa
Modifications	C AM24108 22/04/13 SD		
	B AM24031 14/12/12 BB		
	A AM23337 15/02/10 OD	D AM24474 01/12/15 PR	

Scale 3:10

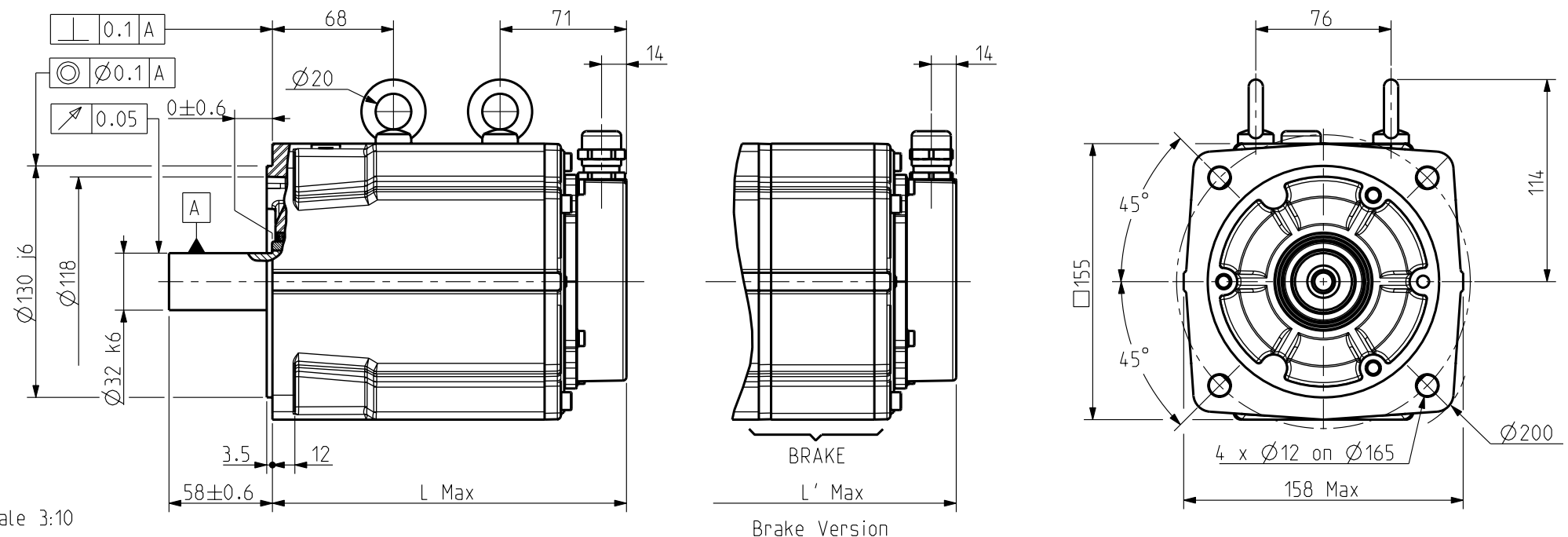
4 boulevard Eiffel - CS 40090
21604 Longvic Cedex - France
www.parker.com

NX800
CONNECTOR VARIANT

Format	F	E	S	G	I
A3		x			

344469

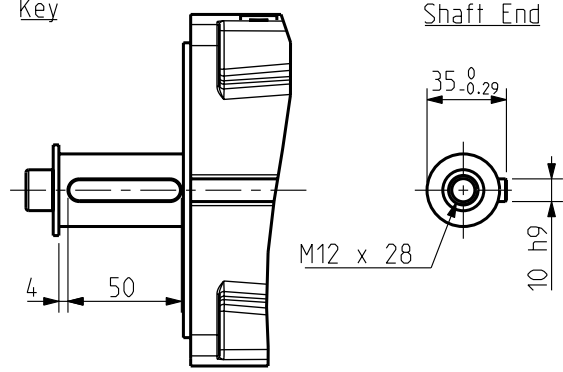
Feedback letter : Y



Scale 3:10

Brake Version

Key



Scale 3:10

BRAKE Supply voltage : 24V ±10%
Static torque

	NX820	NX840	NX860
20 °C	36 Nm	36 Nm	36 Nm
100 °C	32 Nm	32 Nm	32 Nm

Weight

	NX820	NX840	NX860
No Brake	13 Kg	20 Kg	27 Kg
With Brake	16.5 Kg	23.5 Kg	30.5 Kg

	Feedback options (feedback letter)	Sensorless (Y)
NX820	L (mm)	200
	L' (mm)	266
NX840	L (mm)	260
	L' (mm)	326
NX860	L (mm)	320
	L' (mm)	386

N X 8 _ _ E Y _ R 6 _ _ _

Torque range (depends on length) Winding (depends on speed)

- 0 : Plain Shaft
- 1 : key
- 0 : IP 64
- 1 : IP 65
- 0 : Without Brake
- 3 : Brake
- * : Thermal protection options on drawing 344993

See connectors pin out and encoder settings on drawing 344993

Sheet:2/4

THIS DOCUMENT CONTAINS INFORMATION THAT IS CONFIDENTIAL AND PROPRIETARY TO PARKER-HANNIFIN CORPORATION. THIS DOCUMENT IS FURNISHED ON THE UNDERSTANDING THAT THE DOCUMENT AND THE INFORMATION IT CONTAINS WILL NOT BE COPIED OR DISCLOSED TO OTHERS OR USED FOR ANY PURPOSE OTHER THAN CONDUCTING BUSINESS WITH PARKER-HANNIFIN CORPORATION, AND WILL BE RETURNED AND ALL FURTHER USE DISCONTINUED UPON REQUEST BY PARKER-HANNIFIN CORPORATION. THE RECIPIENT OF THIS DOCUMENT THROUGH ITS OWN ANALYSIS AND TESTING IS SOLELY RESPONSIBLE FOR MAKING THE FINAL SELECTION OF THE APPLICABLE SYSTEM AND COMPONENTS AND ASSURING THAT ALL PERFORMANCE, DURABLE, MAINTENANCE, SAFETY AND WARNING REQUIREMENTS OF THE APPLICATION ARE MET. COPYRIGHT PARKER-HANNIFIN CORPORATION. YEAR OF COPYRIGHT IS FIRST YEAR INDICATED ON THIS DOCUMENT. ALL RIGHTS RESERVED.

General tolerances DIN ISO 2768 mK	Drawn	09/07/09	YG	Visa					
	Modifications	C	AM24108 22/04/13 SD						
		B	AM24031 14/12/12 BB						
		A	AM23337 15/02/10 OD		D	AM24474 01/12/15 PR			

Scale 3:10

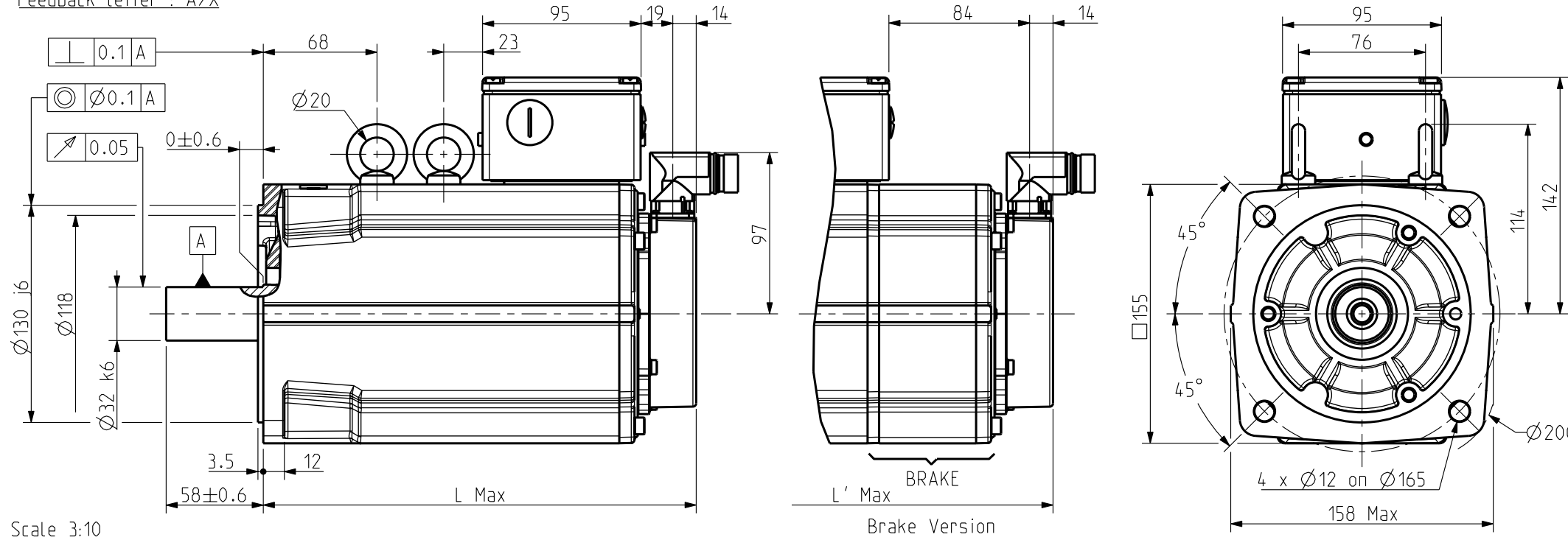
4 boulevard Eiffel - CS 40090
21604 Longvic Cedex - France
www.parker.com

NX800

SENSORLESS VARIANT

Format A3	F	E	S	G	I
		x			
344469					

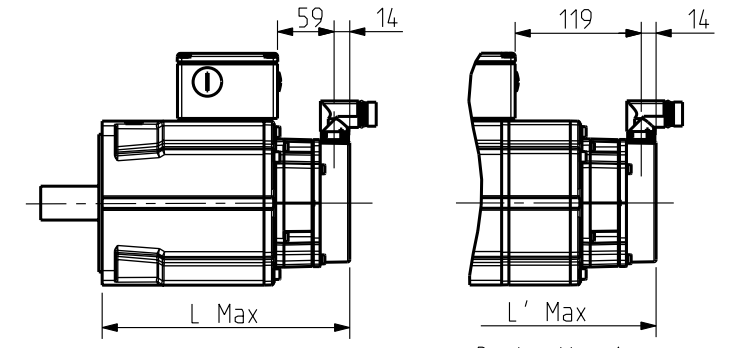
Feedback letter : A/X



Scale 3:10

FEEDBACK OPTIONS

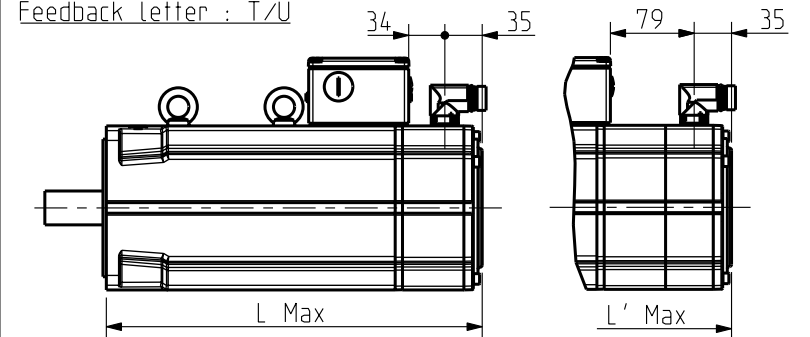
Feedback letter : R/S/V/W



Scale 7:50

Brake Version

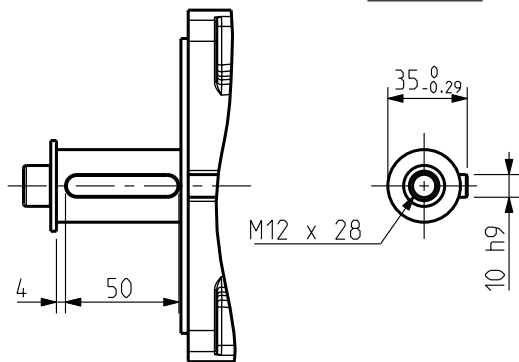
Feedback letter : T/U



Scale 7:50

Brake Version

Key



Scale 3:10

Shaft End

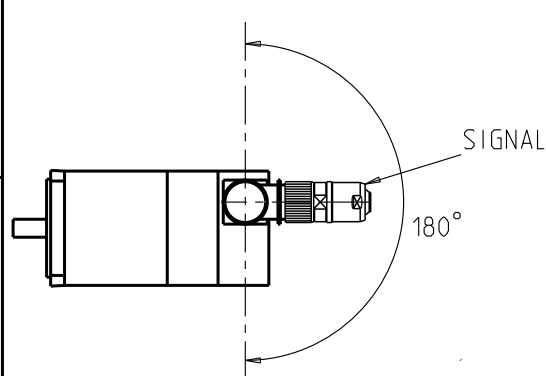
BRAKE Supply voltage : 24V ±10%
Static torque

	NX820	NX840	NX860
20 °C	36 Nm	36 Nm	36 Nm
100 °C	32 Nm	32 Nm	32 Nm

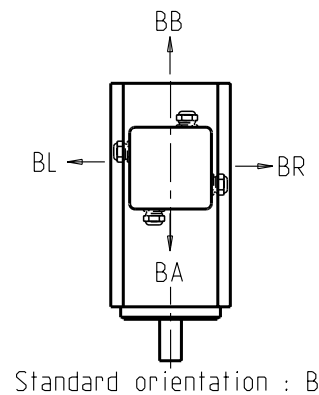
Weight

	NX820	NX840	NX860
No Brake	13.5 Kg	20.5 Kg	27.5 Kg
With Brake	17 Kg	24 Kg	31 Kg

ORIENTATION OF CONNECTOR

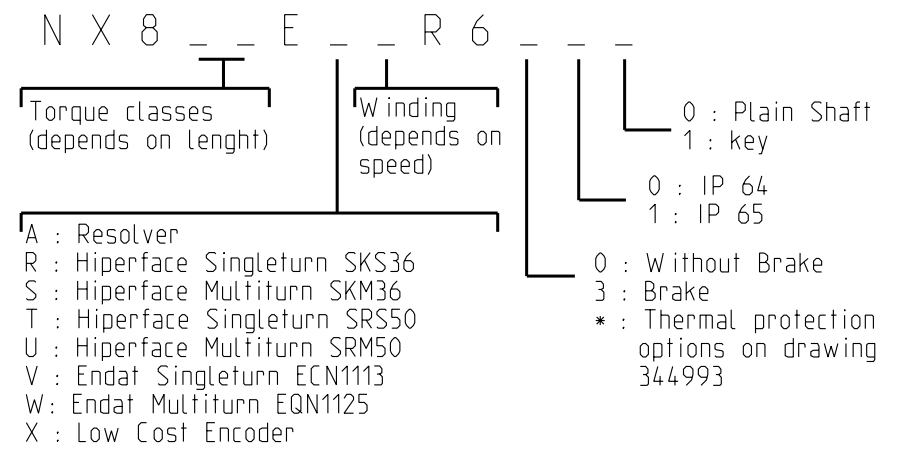


POWER TERMINAL BOX ORIENTATION



Standard orientation : BR

	Feedback options (feedback letter)	Resolver (A)	Low cost encoder (X)	Hiperface SKS36 (R)	Hiperface SKM36 (S)	Endat ECN1113 (V)	Endat EQN1125 (W)	Hiperface SRS50 (T)	Hiperface SRM50 (U)
NX820	L (mm)	200			235			236	
	L' (mm)	266			301			282	
NX840	L (mm)	260			295			296	
	L' (mm)	326			361			342	
NX860	L (mm)	320			355			356	
	L' (mm)	386			421			402	

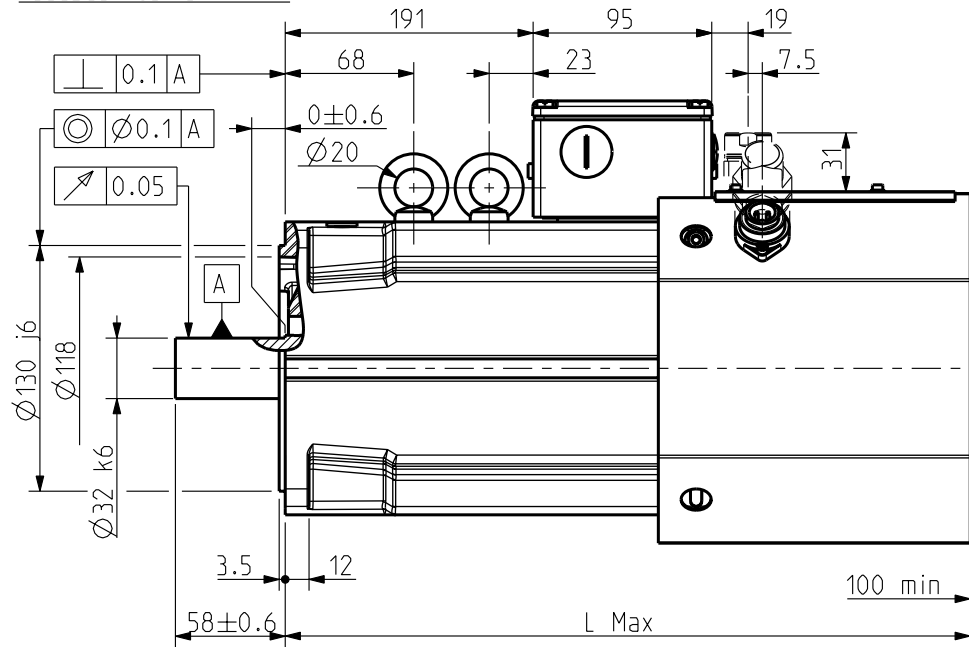


See connectors pin out and encoder settings on drawing 344993

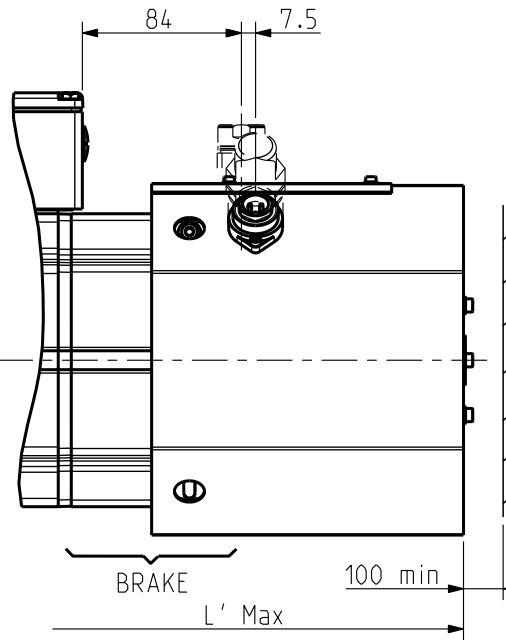
<p>General tolerances</p> <p>DIN ISO 2768 mK</p>	Drawn	09/07/09	YG	Visa						<p>4 boulevard Eiffel - CS 40090 21604 Longvic Cedex - France www.parker.com</p>	<p>NX800</p> <p>TERMINAL BOX VARIANT</p>	Format	F	E	S	G	I	
	Modifications	C	AM24108 22/04/13 SD										A3					
		B	AM24031 14/12/12 BB															
	A	AM23337 15/02/10 OD		D	AM24474 01/12/15 PR													

THIS DOCUMENT CONTAINS INFORMATION THAT IS CONFIDENTIAL AND PROPRIETARY TO PARKER-HANNIFIN CORPORATION. THIS DOCUMENT IS FURNISHED ON THE UNDERSTANDING THAT THE DOCUMENT AND THE INFORMATION IT CONTAINS WILL NOT BE COPIED OR DISCLOSED TO OTHERS OR USED FOR ANY PURPOSE OTHER THAN CONDUCTING BUSINESS WITH PARKER-HANNIFIN CORPORATION, AND WILL BE RETURNED AND ALL FURTHER USE DISCONTINUED UPON REQUEST BY PARKER-HANNIFIN CORPORATION. THE RECIPIENT OF THIS DOCUMENT THROUGH ITS OWN ANALYSIS AND TESTING IS SOLELY RESPONSIBLE FOR MAKING THE FINAL SELECTION OF THE APPLICABLE SYSTEM AND COMPONENTS AND ASSURING THAT ALL PERFORMANCE, DURABILITY, MAINTENANCE, SAFETY AND WARNING REQUIREMENTS OF THE APPLICATION ARE MET. COPYRIGHT PARKER-HANNIFIN CORPORATION. YEAR OF COPYRIGHT IS FIRST YEAR INDICATED ON THIS DOCUMENT. ALL RIGHTS RESERVED.

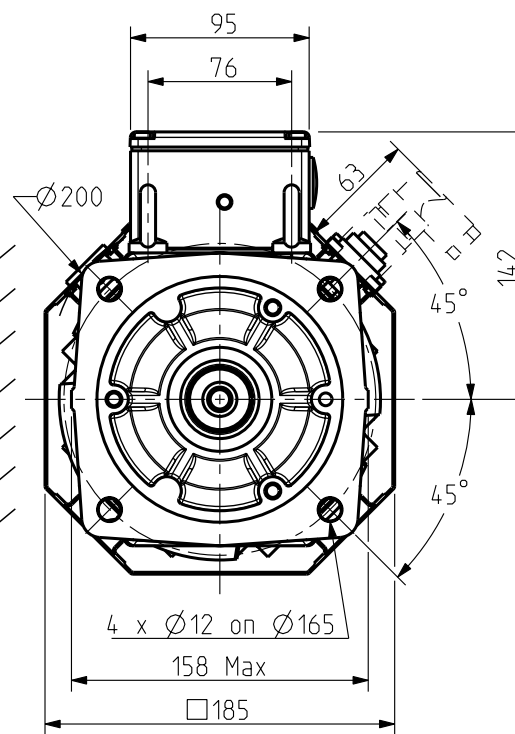
Feedback letter : A/X



Scale 1:4

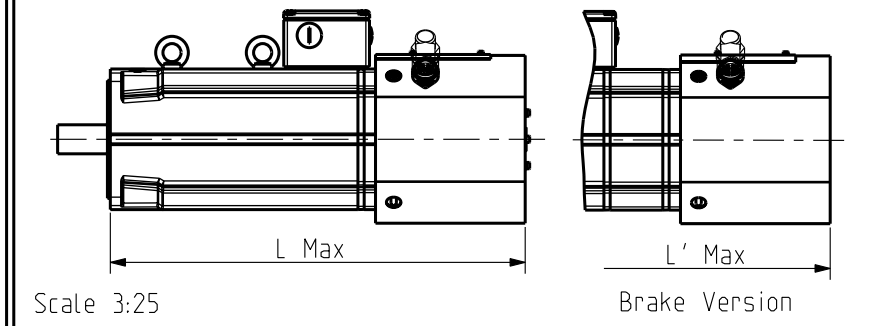


Scale 1:4
BRAKE
L' Max
100 min



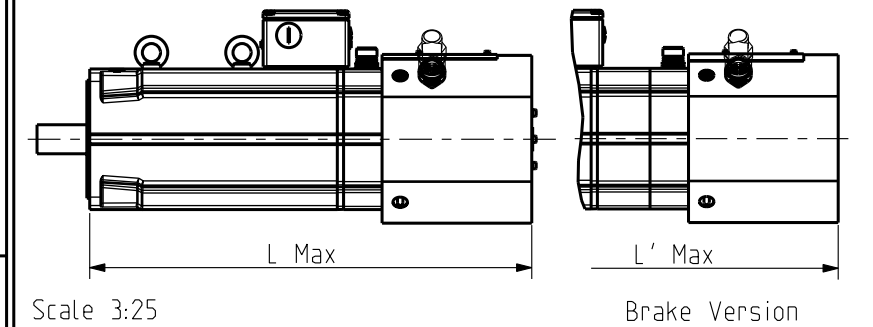
FEEDBACK OPTIONS

Feedback letter : R/S/V/W



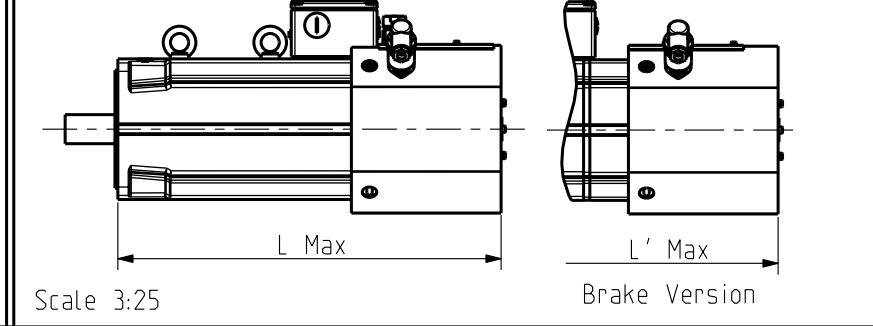
Scale 3:25

Feedback letter : T/U

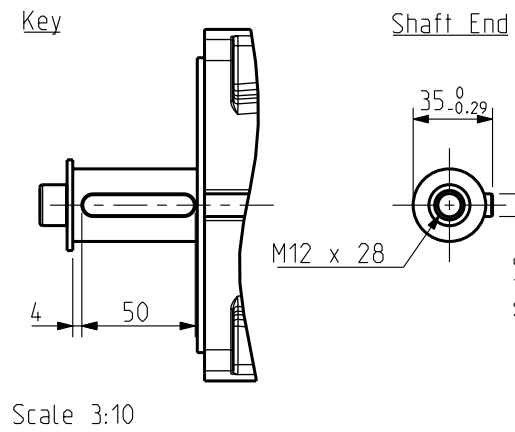


Scale 3:25

Feedback letter : Y



Scale 3:25



Scale 3:10

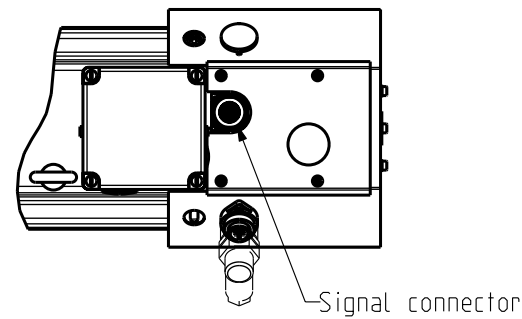
BRAKE Supply voltage : 24V ±10%
Static torque

	NX860
20 °C	36 Nm
100 °C	32 Nm

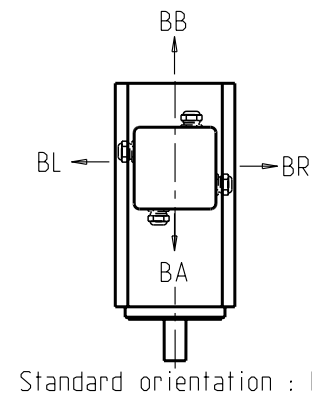
Weight

	NX860
No Brake	30.5 Kg
With Brake	34 Kg

TOP VIEW



POWER TERMINAL BOX ORIENTATION



Standard orientation : BR

	Feedback options (feedback letter)	Resolver (A)	Low cost encoder (X)	Hiperface SKS36 (R)	Hiperface SKM36 (S)	Endat ECN1113 (V)	Endat EQN1125 (W)	Hiperface SRS50 (T)	Hiperface SRM50 (U)	Sensorless (Y)
NX860	L (mm)	424		424		460		490		424
	L' (mm)	490		490		525		555		490

N X 8 _ _ V _ _ R 9 _ _ _
N X 8 _ _ V _ _ R 5 ** _ _ _

Torque range (depends on length) Winding (depends on speed)

0 : Plain Shaft
1 : key
0 : IP 64
1 : IP 65

A : Resolver
R : Hiperface Singleturn SKS36
S : Hiperface Multiturn SKM36
T : Hiperface Singleturn SRS50
U : Hiperface Multiturn SRM50
V : Endat Singleturn ECN1113
W : Endat Multiturn EQN1125
X : Low Cost Encoder
Y : Sensorless

0 : Without Brake
3 : Brake
* : Thermal protection options on drawing 344993

** UL TERMINAL BOX AND VENTILATION

See connectors pin out and encoder settings on drawing 344993

Sheet:4/4

General tolerances
DIN ISO 2768 mK

Drawn	09/07/09	YG	Visa						
Modifications	C	AM24108 22/04/13 SD							
	B	AM24031 14/12/12 BB							
	A	AM23337 15/02/10 OD		D	AM24474 01/12/15 PR				

Scale 1:4

4 boulevard Eiffel - CS 40090
21604 Longvic Cedex - France
www.parker.com

NX800
TERMINAL BOX - VENTILATED

Format	F	E	S	G	I
A3	x				
344469					

THIS DOCUMENT CONTAINS INFORMATION THAT IS CONFIDENTIAL AND PROPRIETARY TO PARKER-HANNIFIN CORPORATION. THIS DOCUMENT IS FURNISHED ON THE UNDERSTANDING THAT THE DOCUMENT AND THE INFORMATION IT CONTAINS WILL NOT BE COPIED OR DISCLOSED TO OTHERS OR USED FOR ANY PURPOSE OTHER THAN CONDUCTING BUSINESS WITH PARKER-HANNIFIN CORPORATION, AND WILL BE RETURNED AND ALL FURTHER USE DISCONTINUED UPON REQUEST BY PARKER-HANNIFIN CORPORATION. THE RECIPIENT OF THIS DOCUMENT THROUGH ITS OWN ANALYSIS AND TESTING IS SOLELY RESPONSIBLE FOR MAKING THE FINAL SELECTION OF THE APPLICABLE SYSTEM AND COMPONENTS AND ASSURING THAT ALL PERFORMANCE, DURABILITY, MAINTENANCE, SAFETY AND WARNING REQUIREMENTS OF THE APPLICATION ARE MET. COPYRIGHT PARKER-HANNIFIN CORPORATION. YEAR OF COPYRIGHT IS FIRST YEAR INDICATED ON THIS DOCUMENT. ALL RIGHTS RESERVED.